

Official Newsletter of the  
**SPOTLIGHT THEATRICAL COMPANY**

*Fostering an outlet for creative youth and community, while seeking to produce vibrant, quality entertainment that enriches, engages and educates.*



**INSIDE:**

**April 2016**

- SPONSOR A CHAIR
- 1/2 YEARLY General Meeting **NO QUORUM**
- DIRECTORS – PLAYBILL 2017 SUBMISSIONS REQUIRED
- **YOUTH THEATRE NEWS**
- GOLDEN GIRLS
- **AUDITIONS - HIGHER & HIGHER - The Mowtown Musical**
- A LAD 'N' HIS LAMP
- **BONNIE & CLYDE**
- HOORAY FOR HOLLYWOOD (Top Hat Productions)

# BONNIE & CLYDE



**Book By** IVAN MENCHELL      **Lyrics By** DON BLACK      **Music By** FRANK WILDHORN

**Director** BRAD KENDRICK      **Musical Director** BRADY WATKINS



ONLINE  
ANYTIME

**MAIN THEATRE 13 MAY - 4 JUNE 2016**

## HOW DISAPPOINTING!

WITH THE NUMBER OF FINANCIAL SPOTLIGHT MEMBERS & THE  
NUMBER OF PEOPLE WHO APPEAR IN OUR SHOWS  
WE COULDN'T GET A QUORUM  
(27) TO ATTEND THE 1/2 YEARLY MEETING  
(as advertised in 4 issues of The Spotlighter & Special Emailed Notice).

### SPOTLIGHT THEATRICAL COMPANY

audition dates and show times - *mark your calendar*

**A LAD 'N' HIS LAMP**  
an ingeniously funny Panto!  
*SHOWTIME*

**DIRECTED BY  
ALEX BREEN**  
JUNE 29 -  
JULY 9

**Higher & Higher**  
The Motown Musical  
AUDITIONS 15 MAY 2016

**DIRECTED BY  
JAMIE WATT**  
AUGUST 12 -  
SEPTEMBER 3

**BREAST WISHES**  
an uplifting musical  
AUDITIONS 19 JUNE 2016

**Directed by Tess Burke  
& Tony Alcock**  
SEPTEMBER 16 -  
OCTOBER 2

**THE MYSTERY OF  
EDWIN DROOD**  
AUDITIONS 24 JULY 2016

*The Solve It Yourself  
Musical*  
OCTOBER 21 -  
NOVEMBER 12

### PARKING AT BENOWA GARDENS

FOR SPOTLIGHT MEMBERS, VOLUNTEERS, & PATRONS  
IS STRICTLY 3 HRS DAILY.

**PLEASE PARK IN THE UNDERGROUND CARPARK.**

PLEASE NOTE: THE 9PM CLOSING TIME IS WAIVED AND IS 11PM  
WHEN THERE ARE NIGHT TIME PERFORMANCES AT SPOTLIGHT.

# ???

# **DIRECTORS**

# ???

## **PLAYBILL SUBMISSIONS REQUIRED FOR 2017**

Directors please present your detailed submissions  
for

Musicals, Pantomimes and Plays  
(OR OTHER EXCITING SUGGESTIONS)  
outlining your ideas and production team  
for presentation during 2017.

### ***APPROXIMATE DATES***

#### **Main Theatre - Musicals**

Mid February/March  
Latter part of May/June  
Late July/August  
Late October/November

#### **Basement Theatre Pantomimes/Plays**

Early January  
Early April  
Late June/July  
Mid September/October

## **Submissions close 30th June 2016**

Please present to: Production Committee  
Spotlight Theatre  
185-187 Ashmore Road, Benowa  
or mail to: Production Chairperson  
Spotlight Theatrical Company,  
PO Box 8074 Gold Coast Mail Centre Q 9726



**ANDREW COCKROFT-PENMAN** (*Senior Drama Teacher*)  
**JONATHAN WHITLOW** (*Musical Theatre Teacher*)  
**HANNAH CROWTHER** (*Intermediate Teacher*)  
**TERRI WOODFINE** (*Primary Teacher*)  
**VAL LEFTWICH** (*YT Administrator*)  
**MARTINA FRENCH / VAL LEFTWICH** (*YT Liaison*)

## FROM YOUTH THEATRE ADMINISTRATOR

In January we engaged the services of Jonathan Whitlow, Andrew Cockroft-Penman and Hannah Crowther as teachers for the Youth Theatre.

Hannah is taking the Intermediate Drama classes on Saturday morning with the assistance of Terri Woodfine and then Terri is taking the Junior Drama classes Saturday afternoon with the assistance of Hannah. This system is working well and the children are very responsive to both teachers.

Andrew is taking the three Senior Drama classes on Monday and Wednesday and he is assisted by Terri.

Jonathan is taking three Senior Music Theatre classes on Monday and Tuesday and is assisted by Martina French.

The students have now become familiar with their teachers and work has begun on productions. I am quite sure that Music Theatre Showcase mid year will be a wonderful production. The senior drama classes are doing the famous Shakespeare play "Mid Summers Night Dream" which I can see the students are really enjoying. The Junior and Intermediate Drama productions are at present being worked upon by Hannah and Terri.

I have received quite a number of calls from parents telling me that their children are enjoying the classes and that is really nice to hear.

As term one draws to an end we will commence classes again on the 11th April when the school term starts.

I have received several enquiries about payment for next term. Parents will be sent an invoice shortly for the second term and payment can be made either through the bank or at the Spotlight Costume Hire shop.

***Valerie Leftwich – Administrator Youth Theatre Programme.***

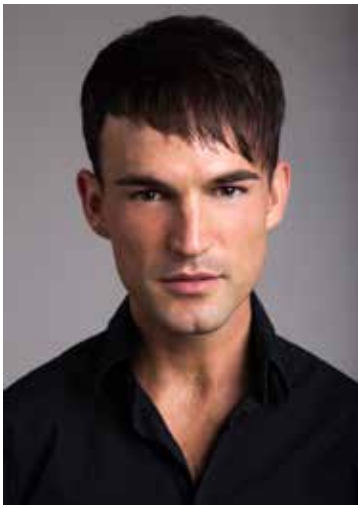
### **INTRODUCING THE SPOTLIGHT YOUTH THEATRE TEACHERS:**

#### **ANDREW COCKROFT-PENMAN – SENIOR DRAMA TEACHER**

Andrew is delighted to take on the role of Senior Drama Teacher following his recent move to the Gold Coast. For the past 4 years Andrew has been studying a Bachelor's Degree in Theatre and Performance from the University of New England, during which time he has directed and acted in numerous productions such as: *Sweeney Todd*, *Into the Woods*, *Wizard of Oz*, *Little Shop of Horrors*, *The Popular Mechanicals*, *Comedy of Errors*, *Much Ado About Nothing* and *The Government Inspector*. Alongside Terri Woodfine, Andrew will be guiding students through various styles of theatre from antiquity to contemporary, and directing the youth theatre students in their production of Shakespeare's *A Midsummer Nights Dream*.

2016 has seen Andrews involvement in Spotlight as Morgan in the Christmas Panto and as Lewis in *Pippin* whilst assisting on the *Higher and Higher* production team and directing *The Mystery of Edwin Drood* at the conclusion of the year. Surprise!





### **JONATHAN WHITLOW - SENIOR MUSIC THEATRE TEACHER**

Jonathan is thrilled to be teaching Senior Music Theatre Classes for Spotlight after many years travelling the world and performing abroad. As a graduate of Davidia Lind Dance Centre's Diploma: Musical Theatre Performance & Commercial Dance (2006), he has been blessed to be a part of three national tours - Hugh Jackman's *The Boy From Oz* (Brisbane/Supernumerary), *Buddy: The Buddy Holly Story* (Ensemble, Joe Maudlin Cover, Featured Saxophonist) and *FAME* (Goodman 'Goody' King). Jonathan has also enjoyed a number of years performing with Royal Caribbean Cruise Lines in their incredible Production Shows, first as dancer, then as Featured Singer since 2012. He has also been Vocal Captain for the company, which involves maintaining the integrity of the vocals as they were taught, vocal health, troubleshooting difficult vocal passages, and working closely with the Company Manager, Musical Director and Stage Manager to schedule rehearsals, sound checks and performances.

Jonathan has studied voice with Kirri Adams, Caroline Taylor, former Tenor Greg Moore, and Matthew Ward, and now teaches private singing and piano lessons at Vocal Adrenaline Performing Arts. Memorable roles include Sonny in *Grease* (Gold Coast Arts Centre), Claude in *HAIR* (GCAC), Troy Bolton in *High School Musical* (GCAC) and most recently Peter Allen in Spotlight's *The Boy From Oz*. He enjoys teaching immensely, and is extremely grateful to be a part of the incredibly talented Spotlight teaching staff.

### **HANNAH CROWTHER - INTERMEDIATE TEACHER**

Hannah made her professional theatre debut in *Oklahoma!* and then in *Cats* as Rumpleteazer for Harvest Rain Theatre Company (HRTC). She has performed in *Spring Awakening* (Ilse, Movement Director, Dance Captain) for Javeenbah Theatre Company, *Legally Blonde* (Enid, Dance Captain) with Spotlight Theatrical and choreographed the original musical *Billy Buckett* (Beenleigh Theatre Company) which earned her a Best Choreographer Award at the Gold Coast Theatre Awards 2013.

Hannah toured Australia with Camp Quality as part of their education program, anti-bullying puppet shows *Inside Out* and *The Way You Look At It*. She also performs weekly as vocal partner with DJR PRODUCTIONS.

Hannah participated in workshops of *Astraeus* (The Blacklight Collective), *Oasis* (That Old Fashioned Production Company) and *Metalhead* as Kate Kelly (Underground Productions). Hannah has performed in many shows including

*The Sound of Music*, *Jesus Christ Superstar*, *Grease*, *Spelling Bee*, *Sweet Charity*, and *Ink and the Unknowns* with HRTC. With Redcliffe Musical Theatre she worked as an Urchin in *Little Shop of Horrors*.

Hannah has also performed internationally with The Hong Kong Oratorio Society and touring to California Adventureland, Knotts Berry Farm and Disneyland.

Throughout her life, Hannah has completed various dance, drama and musical theatre exams, most notably having achieved a Diploma in Musical Theatre with Distinction (Trinity College of London), Distinction for Grade 8 Drama (Trinity College of London), Grade 1 Theatrical Examination (Commonwealth Society of Teachers of Dancing), and Intermediate Ballet (Royal Academy of Dancing).

Hannah is a passionate teacher and loves working with children and watching them grow into strong, confident performers.



**ALL TERM FEES PAYABLE TO SPOTLIGHT THEATRICAL COMPANY**

**BY CASH, CHEQUE, CREDIT CARD OR DIRECT DEPOSIT TO :**

**BANK OF QUEENSLAND BSB 124-086 Account: 22100850**

**If you have more than one child attending classes, every child after the first enrolment will receive \$10:00 discount.**

**CONTACT: Youth Theatre Administrator, VAL LEFTWICH**

**ph: 0452 501 941 email: val@leftwich.com.au**

# ARE YOU A FINANCIAL SPOTLIGHT MEMBER?

**ONLY**

**\$10 PER ANNUM Adults – \$5 Youth (under 18 yrs)**

Become  
a **SPOTLIGHT  
MEMBER**  
Save \$7 on your Show  
Ticket PLUS Costume  
Hire & other  
benefits.

TO TAKE PART IN OUR SHOWS & ENSURE  
YOU RECEIVE MEMBER PRICES AND  
DISCOUNTS YOU NEED TO  
**RENEW / JOIN NOW**

The form can be downloaded from:

[http://spotlighttheatre.com.au/  
Membership/membership\\_form\\_2013.pdf](http://spotlighttheatre.com.au/Membership/membership_form_2013.pdf)

or visit/phone Costume Hire at Spotlight Theatre  
to join/renew your membership.

## PIPPIN

WHEN *PIPPIN* CHOOSES THE ORDINARY,  
HE BECOMES EXTRAORDINARY!



CLAY ENGLISH – Leading Player

Spotlight Patrons who saw *Pippin* at our Theatre agreed it was not an ORDINARY show but *was indeed* EXTRAORDINARY.

CONGRATULATIONS to all involved and Thank You Director Trent Ivett, Creative & Production Teams and Cast Members.

Throughout rehearsals comments from Cast Members were very positive and exciting and it seems they gained much insight, joy and inspiration from the experience of being part of such an Extraordinary Musical at The Spotlight Theatre!

**CLAY ENGLISH - LEADING PLAYER** had this to say just prior to Closing Night:

“Admittedly I knew nothing about *PIPPIN* before I auditioned, but never has a role been more thrilling, more exciting and more impacting on my life. I thank each and every one of you who’ve supported this production in what ever capacity that may have been. Thanks to Trent and the creative team for taking a chance on me and thanks to the cast for allowing me to be your *Leading Player* - none of what I do is possible without you. Here’s to the Glory and Simple Joys of closing night.”

## GOLDEN GIRLS NEWS

We are now in full swing with our first season concert.

We have completed shows at Sandbrook Nursing Home at Treetops, Golden Age at Southport and Tall Trees at Banora Point. We have four shows remaining for the month of March.

We are now in the process of selecting new numbers and costumes for our second season, which will begin on the 2nd of August, with rehearsals every Wednesday.

I have included photos of Trish Sam, Kerry and myself, in *Step In Time*, Sam and Kerry and myself in *In The Mood*. Some other numbers for this season include *Argentina*, *I Will Remember Vienna* and *Wonderful Day Like Today* to name just a few.

Now back to the boards.

**Noni Buckland**  
**Golden Girls Liaison**



**Carpet  
Cleaning  
& Pest Control**

**Gary Matheson**

**Proprietor**

DISCOUNT FOR SPOTLIGHT MEMBERS

**Stain Removal Specialist,  
Steam or Dry Clean**

PHONE: (07) 5576 2820

MOBILE: 0419 756 127

**YOUR DRY WAY PROFESSIONAL**

## March 20th was World Theatre for Children and Young People Day

Some of you might be thinking, “Oh lord, why do we need a day to celebrate actors being silly, wearing bright colors and singing obnoxiously at squirming kiddos and bored parents?” But if you think that’s what **Theatre for Young People** is, you’re missing out on truly powerful, hilarious, bold, engaging, surprising theatre that might just save the world.

Around the world artists are creating a new stripe of **Theatre for Young People** that combines the elegance of dance, the innovation of devised theatre, the freshness of new plays, the magnetism of puppetry and the inciting energy of new musicals. Kids have access to more and more mature theatrical visions premiering all over the world.

These plays range from re-imagined fairy tales and adaptations of favorite books to brand-new plays and electric new musicals about everything from physics to bullying to the American Civil War.

But how could theatre, especially theatre for young people, really matter in a world as fraught and disparity-scattered as ours?

Not to sound overly grand (too late), but so much of the toxicity in this world comes from a collective draining of empathy. We don’t understand each other, and we don’t want to. But theatre invites us — no, forces us — to empathize.



Bill English of San Francisco’s SF Playhouse says, “theatre is like a gym for empathy. It’s where we can go to build up the muscles of compassion, to practice listening and understanding and engaging with people that are not just like ourselves. We practice sitting down, paying attention and learning from other people’s actions. We practice caring.”

Kids need this kind of practice even more than adults do. This is going to be their planet and they’ve got more time to apply that empathy and make a difference.

Why not take your child to the theatre to do just that.

In fact

“Take A Child to the Theatre Today” is the campaign theme of The International Association of Theatres for Young Audiences for the next three years.

If you take a child to the theatre, not only will they practice empathy, they might also laugh uproariously, or come home singing about science, or want to know more about history, or tell you what happened at school today, or spend all dinner discussing music, or learn how to handle conflict, or start becoming future patrons of the arts.

Take a child to the theatre. Take them all the time. And don’t “sit back, relax, and enjoy the show.” Lean forward, engage and start changing the world for the better.

By chance, auditions for **‘A Lad ‘n’ His Lamp’** were also on the 20th March with many young (and young at heart) hopefuls strutting their stuff for Director Alex Breen and his team. The casting will be announced in the next edition or check in on our Facebook page <https://www.facebook.com/SpotlightTheatricalCompany/>



Terri Woodfine & Director Alex Breen  
at ‘A Lad ‘n’ His Lamp’ Auditions





THE SPOTLIGHT THEATRICAL COMPANY  
PROUDLY PRESENTS

# A LAD 'N' HIS LAMP

*"THE INGENIEOUSLY  
MAGICAL PANTO"*

*"AN ARABIAN ADVENTURE  
FOR ALL THE FAMILY!"*

**DIRECTOR**  
**ALEX BREEN**

**MUSICAL SUPERVISION**  
**MATT PEARSON**

**BASEMENT THEATRE**

**29 JUNE - 9 JULY**

**2016**

**2 SHOWS DAILY**  
**10:30AM & 2:00PM**

**BOOK & PAY**

**(07) 5539 4255**

**[www.spotlighttheatre.com.au](http://www.spotlighttheatre.com.au)**



# SPOTLIGHT THEATRICAL COMPANY



## SPONSOR A CHAIR

The **Spotlight Theatrical Company** wishes to acknowledge and thank you for your donation to sponsor a chair/s. This sponsorship is urgently needed to replace 240 chairs with new, quality, stackable chairs to fill both our main stage theatre and basement theatre. The **cost of a chair is \$90.00** and Spotlight will have a plaque created and attached to back of every chair purchased by a sponsor.

As this is considered a donation, it would be tax deductible and a tax receipt will be forwarded to person/business donating.

Should you wish to become part of this sponsorship please complete the following and forward to:

Spotlight Theatrical Company, PO Box 8074, Gold Coast Mail Centre, Qld 9726

Or, personally deliver to:

Costume Hire, Spotlight Theatre, 185-187 Benowa Road, Benowa.

**Details to appear on plaque:** PLEASE PRINT CLEARLY BELOW IN THIS TINTED AREA:

**Send tax receipt to:**

Name: \_\_\_\_\_

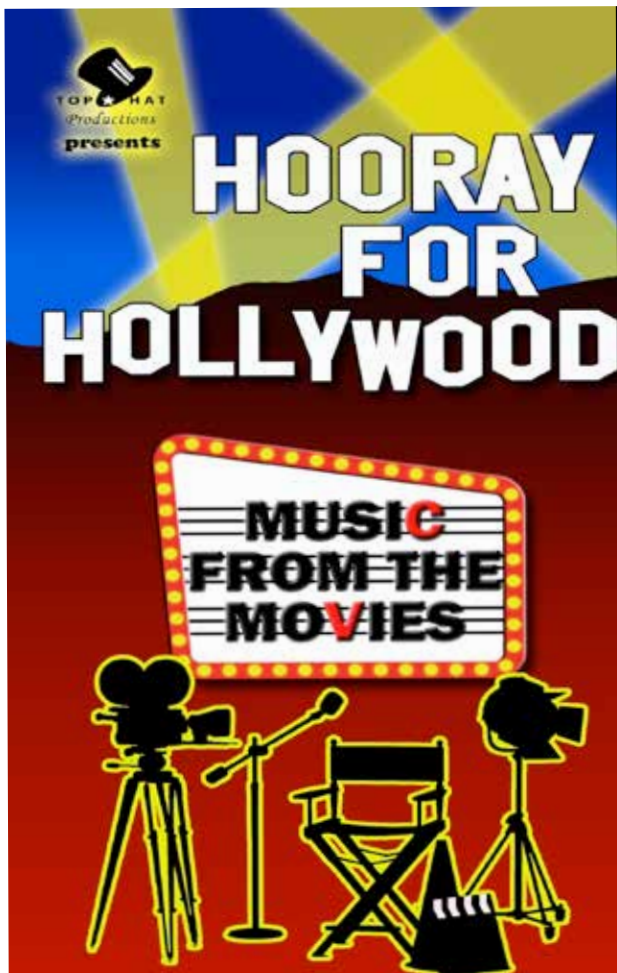
Address: \_\_\_\_\_

\_\_\_\_\_

Phone No: \_\_\_\_\_ Email: \_\_\_\_\_

**Payment Type:** Cash  Cheque  Amex  Visa  Master Card

Card No.	Expiry Date	CCV No.



# HOORAY FOR HOLLYWOOD!

*(Music from the Movies!)*

**Season: Thurs-Sat 31 March-17 April**  
**DIRECTOR: Kate Peters**

**Don't miss this nostalgic look at the Movies, and Stars of the past 100 years!**

**From the people who brought you HATS The Musical, RUTHLESS The Musical, ISN'T IT ROMANTIC? IN THE MOOD (The 1940s Big Band Show), IN THE MOOD - AGAIN! (The Golden Age of Radio Show) and LET'S MISBEHAVE (The 1920S Jazz Age Party)**

**Grab a ticket to the show that celebrates the best of Hollywood's blockbuster movies!**  
**CALL 5539 4255 to book NOW!**



**SEASON: Thursday/Friday/Saturday 31st March, 1-2 April at 7.30pm**

**Thursday/Friday/Saturday 7-9 April at 7.30pm**

**Thursday/Friday/Saturday 14-16 April at 7.30pm**

**Sunday 3, 10, 17th April at 4.00pm.**

**BOOKINGS ARE NOW OPEN ON 5539 4255**



# AUDITION ANNOUNCEMENT

**DIRECTOR/CHOREOGRAPHER**

Jamie Watt

**CREATIVE MUSIC SUPERVISOR**

Peter Laughton

**MUSIC DIRECTOR**

Ben Murray

**ASSOCIATE CHOREOGRAPHERS**

Kellie Niebling & Lauren Wormald

The Creative Team are searching for a **high energy, diverse** community theatre cast covering full vocal and dance ranges to perform in this exciting, entirely new musical experience.

The production will feature an explosive live band who will rock their way through over **50** classic songs that span the Motown and disco era, including *'River Deep, Mountain High'*, *'Heatwave'*, *'Walk Away Renee'*, *'Hot Stuff'*, *'September'* and many more!

Please prepare **TWO** songs, one up-tempo one ballad that fit the Motown era and show full vocal range and dynamic. **VERSE AND CHORUS ONLY PLEASE.** Accepted musical accompaniment will be on CD, iPHONE, MP3 or USB.

**\*\*NO ACAPELLA AUDITIONS (without backing) WILL BE ACCEPTED\*\***

Auditions are by appointment only. An individual audition time will be allocated.

**REHEARSALS COMMENCE 22<sup>nd</sup> MAY 2016 and will be scheduled Sunday –Thursday (not all roles required all days)**

**AUDITION DATES:  
SUNDAY 15<sup>th</sup> MAY**

**DANCE AUDITION 9am – 10am**  
**MOVEMENT AUDITION (For those auditioning for singing/vocal backing Roles) 10am – 11am**  
*Spotlight Main Stage Theatre*

(Please note that dance/movement audition is **compulsory** for all auditionees)

Please arrive in appropriate clothing and footwear (jazz shoes), bring a towel, water and deodorant.

**VOCAL AUDITIONS 12pm onwards in allotted appointments**

**CALLBACKS WILL BE HELD ON TUESDAY 17<sup>th</sup> MAY IF REQUIRED**

**SEASON OPENS 12<sup>th</sup> AUGUST 2016**

**Season Dates:**

**Previews** 10, 11 August

**Evening Shows:** 12,13, 18, 19, 20, 25, 26, 27 August 1, 2, 3 September

**Matinees:** 21, 28 August

To Register for an audition and/or further information:

**mailbox@spotlighttheatre.com.au**



**THE SPOTLIGHT THEATRICAL COMPANY  
PROUDLY PRESENTS**

**CONCEPT BY  
JAMIE WATT &  
PETER LAUGHTON**



# Higher & Higher

**DIRECTOR/CHOREOGRAPHER  
JAMIE WATT**

**MUSICAL DIRECTOR  
PETER LAUGHTON**

## **THE MOTOWN MUSICAL**

**MAIN THEATRE  
12 AUG - 3 SEP 2016**


**BOOK & PAY**

**(07) 5539 4255**

**WWW.SPOTLIGHTTHEATRE.COM.AU**

# UPCOMING SHOWS

THE SPOTLIGHT THEATRICAL COMPANY PROUDLY PRESENTS



## Breast Wishes

An Uplifting Musical

Music & Lyrics by  
**BRUCE BROWN**

Book by  
MERRIDY EASTMAN, JONATHAN GAVIN,  
RICHARD GLOVER, WENDY HARMER,  
SHERIDAN JOBBINS, JAMES MILLAR  
& DEBRA OSWALD

Concept by  
**ANNE LOOBY**

By arrangement with Hal Leonard Australia Pty Ltd

Directed by  
Tess Burke & Tony Alcock


Musical Director  
Marie Nicholson

Choreographed by  
Lauren Wormald

Basement Theatre | 16 Sep - 2 Oct 2016

BOOK & PAY  
**(07) 5539 4255**  
www.spotlighttheatre.com.au

THE SPOTLIGHT THEATRICAL COMPANY PROUDLY PRESENTS



## The MYSTERY of EDWIN DROOD

The Solve It Yourself Musical

A MUSICAL BY RUPERT HOLMES

ORIGINAL BROADWAY PRODUCTION PRODUCED BY THE NEW YORK SHAKESPEARE FESTIVAL, JOSEPH PAPP PRODUCER

BASED ON THE UNFINISHED NOVEL BY CHARLES DICKENS

BY SPECIAL ARRANGEMENT WITH TAMBA-WITMARK MUSIC LIBRARY INC. N.E.

MAIN THEATRE  
21 OCT - 12 NOV 2016

BOOK & PAY  
**(07) 5539 4255**  
www.spotlighttheatre.com.au

**THE SPOTLIGHT THEATRICAL COMPANY COMMITTEE MEETING is held THIRD TUESDAY EACH MONTH – 7:00pm at The Spotlight Theatre Complex unless otherwise advised.**

## Don Kibble (GOLD COAST)

DRAWING OFFICE SUPPLIES  
PTY LTD ABN 48 873 687 565

for all your: • plan printing • photocopying  
• colour copying • binding • laminating  
email: plans@kibbles.com.au  
ph: 5532 0499  
18 George Street, Southport  
fax: 5532 0714

### Spotlighter Deadline 19th of each month

Please forward articles and pics to  
shirley@spotlighttheatre.com.au

### SPOTLIGHTER ADVERTISING RATES

Per Month: 1/4 page - \$20.00 + GST  
1/2 page - \$40.00 + GST  
Full page - \$60.00 + GST

### GOLD COAST THEATRE ALLIANCE

For an update on all current and scheduled plays and shows by Gold Coast and Tweed Shire member groups visit the website:  
<http://www.goldcoasttheatre.com.au>

Theatre Alliance Secretary:  
theatrealliance@qld.chariot.net.au

## SPOTLIGHT COSTUME HIRE

We have thousands of costumes!

OPENING HOURS  
Mon, Tues, Wed, Fri  
9am - 5:30pm  
Thurs - 9am - 7pm  
Sat - 9am - 4pm  
185-187 Ashmore Rd Benowa (Next to the Benowa Gardens Shopping Centre)

a huge range of unique & unusual accessories to buy or hire!

Hats, masks, jewellery, wigs, stockings, head pieces & much more

Mehron Theatrical & Special Effects makeup

**5539 4700**

e costume-hire@spotlighttheatre.com.au  
www.spotlight-costume-hire.com



FEELING HOT!  
DO YOU KNOW?

Ice cream can be purchased at Spotlight ...  
ask one of our friendly volunteers serving behind the bar!



**Joel Beskin's 'Theatre Roundup'**  
is now on Air every week on Tuesdays.  
Tune in to 4CRB 89.3FM between 2.35pm and 3pm  
for Community Theatre News and  
**Kate Peter's 'Showbiz Buzz'**  
will air on the same station at 2.15pm Friday afternoons.

**BRONZE  
CORPORATE  
SPONSOR**



Securing Peace Of Mind

Insurance Brokers  
For all your insurance  
requirements contact Glenda  
on (07) 5538 8988

**Thank You to John Taylor BMus**

for a significant sponsorship towards Spotlight Theatre sound systems  
m: 0419 676 213 e: john@jtap.com.au www.jtap.com.au

	* Custom Cables	* Theatre Production
	* Multicores	* School Musicals
	* Show Automation	* Audio Operators
	* Installations	* Radio Mic Hire
	* CCTV & MATV	* Equipment Sales

– SPONSOR –

**Spotlight Theatre acknowledges and thanks**



**for their substantial Rate donation.**



THE SPOTLIGHT THEATRICAL COMPANY  
PROUDLY PRESENTS

# BONNIE & CLYDE

Book By **IVAN MENCHELL**      Lyrics By **DON BLACK**      Music By **FRANK WILDHORN**

Director **BRAD KENDRICK**      Musical Director **BRADY WATKINS**



**MAIN THEATRE 13 MAY - 4 JUNE 2016**

**BOOK & PAY**

**(07) 5539 4255**

**[www.spotlighttheatre.com.au](http://www.spotlighttheatre.com.au)**

By arrangement with Hal Leonard Australia Pty Ltd Exclusive agent for Music Theatre International (NY)



## CONTACT INFORMATION – SPOTLIGHT COUNCILLORS 2015-2016

**Acting President** *Patricia Drew* e: patsydrew@bigpond.com

**Secretary:** *Diana Gibson* e: theatreyne@gmail.com

**Treasurer:** *Michelle Edwards* e: michelle@spotlighttheatre.com.au

### **Councillors**

*Tony Alcock* e: mailbox@spotlighttheatre.com.au

*Brock Dunstan* e: brockdunstan@hotmail.com

*Martina French* e: davidandtina@bigpond.com

*Erica Graham* e: erica@spotlighttheatre.com.au

*Shirley King* e: shirley@spotlighttheatre.com.au

*Val Leftwich* e: val@leftwich.com.au

*Jamie Watt* e: j\_j\_watt@hotmail.com

*Terri Woodfine* e: terri\_woodfine@hotmail.com

### **Production Committee**

**Chair Person:** *Tony Alcock* e: mailbox@spotlighttheatre.com.au

**Committee:** *John Davidson, Josh Lovell, Jess Papst, Matt Pearson and Terri Woodfine*

**Theatre Technical Consultant** *Michael Sutton*      **Lighting Co-ordinator** *Shaun Wilson*

**Library** *Matt Pearson* e: matt.pearson@live.com.au

**Small Props** *Terri Woodfine* e: terri\_woodfine@hotmail.com

**Grants** *Duncan Sims*

**Insurance** *Glenda Kusters* Insurance matters e: glenda@leaib.com.au

**Fire & Security Contacts:** *Tony Alcock, Brock Dunstan, Jamie Watt*

**Administration Liaison/Group Bookings/Membership Coordinator/ Royalties/Theatre Hire & Usage/Key Dist. & Registration/Gift Coordinator/Volunteer FoH Roster Coordinator/Liaison**

*Michelle May Administration W 07 5539 4255*

**Publicity** e: publicity@spotlighttheatre.com.au *Tony Alcock*

**Social Media** *Brock Dunstan & Jamie Watt*

**Costume Hire** *Michelle May W 5539 4700*      *Tony Alcock – Costume Coordinator – W 5539 4255*

**Youth Theatre Teachers** e: youth@spotlighttheatre.com.au

*Andrew Cockroft-Penman (Head Teacher), Jonathan Whitlow (Musical Theatre Teacher)*

*Hannah Crowther (Intermediate Drama Teacher)*

*Terri Woodfine (Junior Drama Teacher) Martina French (Vocal Coach)*

**Youth Theatre Administrator** *Val Leftwich* e: val@leftwich.com.au

**Youth Theatre Liaison Officer** *Martina French & Val Leftwich*

**Golden Girls Liaison** *Noni Buckland* e: noni.buckland@bigpond.com

**Sponsorships** *Erica Graham* e: erica@spotlighttheatre.com.au

**Bar Manager - RMLV** *Duncan Sims*

**Charity Night Co-ordinator** *Helen Maden* e: hpmaden2@gmail.com

**G.C. Theatre Alliance Representative** *Joel Beskin / Erica Graham*

**Webmaster** *Michael Thomas* e: stc\_webmaster@showbizaustralia.com

**Programmes** *Chris Dickinson* e: chris@spotlighttheatre.com.au

**Spotlighter Editor** *Shirley King* e: shirley@spotlighttheatre.com.au

185-187 Ashmore Road Benowa PO Box 8074 GC Mail Centre Q 9726 P: 07 5539 4700  
e: mailbox@spotlighttheatre.com.au youth@spotlighttheatre.com.au  
Online Booking: www.spotlighttheatre.com.au or Phone 5539 4255