

Official Newsletter of the  
**SPOTLIGHT THEATRICAL COMPANY**

*Fostering an outlet for creative youth and community, while seeking to produce vibrant, quality entertainment that enriches, engages and educates.*

February 2016



**PIPPIN** – a musical with sizzling choreography, wondrous feats and soaring songs from Stephen Schwartz - the composer of **WICKED**, **GODSPELL**, **PRINCE OF EGYPT** and **ENCHANTED**.



DIRECTED BY TRENT IVETT

CHOREOGRAPHED BY ABBY SWANBOROUGH

MUSICAL DIRECTORS – MATT PEARSON & JULIE WHITING

19TH FEBRUARY - 12 MARCH 2016 AT SPOTLIGHT THEATRICAL COMPANY

BOOKINGS (07) 5539 4255

[www.spotlighttheatre.com.au](http://www.spotlighttheatre.com.au)

**INSIDE:**

- AUDITIONS & SHOWTIMES 2016
- PIPPIN
- ROBIN HOOD
- 1/2 YEARLY – General Meeting
- PLAYBILL 2017 SUBMISSION NOTICE
- YOUTH THEATRE INFORMATION
- AUDITIONS – Bonnie & Clyde
- HOORAY FOR HOLLYWOOD (Top Hat Productions)
- UPCOMING SHOWS
- MEMBERSHIP NEW/RENEWAL FORM



**SPOTLIGHT THEATRICAL COMPANY**

**audition dates and show times - mark your calendar**

**PIPPIN**

**SHOWTIME**

**DIRECTED BY  
TRENT IVETT**

**FEBRUARY 19 -  
MARCH 12**

**BONNIE & CLYDE**  
**a new musical**

**AUDITIONS 7 FEBRUARY 2016**

**Directed by  
Brad Kendrick**

**MAY 13 -  
JUNE 4**

**A LAD 'N' HIS LAMP**

**an ingeniously funny Panto!**

**AUDITIONS 3 APRIL 2016**

**DIRECTED BY  
ALEX BREEN**

**JUNE 29 -  
JULY 9**

**Higher & Higher**

**The Motown Musical**

**AUDITIONS 15 MAY 2016**

**DIRECTED BY  
JAMIE WATT**

**AUGUST 12 -  
SEPTEMBER 3**

**BREAST WISHES**

**an uplifting musical**

**AUDITIONS 19 JUNE 2016**

**Directed by Tess Burke  
& Tony Alcock**

**SEPTEMBER 16 -  
OCTOBER 2**

**THE MYSTERY OF  
EDWIN DROOD**

**AUDITIONS 24 JULY 2016**

*The Solve It Yourself  
Musical*

**OCTOBER 21 -  
NOVEMBER 12**

**PARKING AT BENOWA GARDENS**

**FOR SPOTLIGHT MEMBERS, VOLUNTEERS, & PATRONS  
IS STRICTLY 3 HRS DAILY.**

**PLEASE PARK IN THE UNDERGROUND CARPARK.**

**PLEASE NOTE: THE 9PM CLOSING TIME IS WAIVED AND IS 11PM  
WHEN THERE ARE NIGHT TIME PERFORMANCES AT SPOTLIGHT.**

# 60



## The *Spotlight* Theatrical Company

### ANNIVERSARY YEAR GOES OUT WITH A BANG!

It seems a long time ago now, but in May, we celebrated our Diamond Jubilee Gala event, with over 200 friends - old and new - at the Southport Yacht Club. This was truly a fun evening, filled with love, good vibes and many happy faces. It was fantastic to catch up with so many dear friends and watch some wonderful performances by Spotlight members from days gone by, through to our talented youth theatre performers.

Our other big event for the year was of course, the New York Raffle which ran just over 12 months.

The 60th Anniversary Committee is proud to announce these two exciting events raised a total of **\$18,653.10 (Profit)** for the Company. Job well done!

Here's to the next 60 years of first class entertainment at Spotlight Theatre.

Helen Maden

*Co-ordinator*

*Diamond Jubilee Gala Event/New York Raffle*



**SPOTLIGHT  
YOUTH THEATRE**

Performance skills training  
for young people  
aged 18 and under



Spotlight Theatre facilitates a fun and supportive environment with professionally experienced, highly qualified theatre educators.

Make friends for life while developing the skills for a lifetime. It's time to shine.

youth@spotlighttheatre.com.au  
**(07) 5539 4255**  
www.spotlighttheatre.com.au

### Spotlighter Deadline 19th of each month

Please forward articles and pics to  
shirley@spotlighttheatre.com.au

### SPOTLIGHTER ADVERTISING RATES

Per Month: 1/4 page - \$20.00 + GST  
1/2 page - \$40.00 + GST  
Full page - \$60.00 + GST

### GOLD COAST THEATRE ALLIANCE

For an update on all current and scheduled plays and shows by Gold Coast and Tweed Shire member groups visit the website:

<http://www.goldcoasttheatre.com.au>

Theatre Alliance Secretary:  
theatrealliance@qld.chariot.net.au



**SPOTLIGHT  
COSTUME HIRE**

We have thousands of costumes!

**OPENING HOURS**  
Mon, Tues, Wed, Fri  
9am-5.30pm  
Thurs - 9am - 7pm  
Sat - 9am - 4pm  
185-187 Ashmore Rd Benowa (Next to the Benowa Gardens Shopping Centre)

**a huge range** of unique & unusual accessories to buy or hire!

Hats, masks, jewellery, wigs, stockings, head pieces & much more

Mehron Theatrical & Special Effects makeup

**5539 4700**

e costume-hire@spotlighttheatre.com.au  
www.spotlight-costume-hire.com

# PIPPIN



DIRECTED  
BY  
TRENT  
IVETT



## WHEN *PIPPIN* CHOOSES THE ORDINARY, HE BECOMES EXTRAORDINARY!

*Pippin* is a largely under-appreciated musical with a great deal more substance to it than many people realize. Because it rejects a Happily-Ever-After in favour of a real world ending of compromise and doubt, and because it is happening in real time and on a stage, it may also be one of the most realistic musicals ever produced. Though it is set in Charlemagne's France, it is about the here and now; sprinkled with anachronisms in the costumes and dialogue, it makes no pretence at actually being a period piece, despite its characters' names. The show deals with the coming of age, the rites of passage, the lack of role models and guidelines for the young adults of today's society, and the hopelessness that has become more and more prevalent among young people.

Pippin is a young man with no idea what he wants from his life. Luckily, a travelling troupe of players appear who have helped other young men in Pippin's predicament. They offer to play out his life for him – with coloured lights, music and dance, comedy and drama – so that he can try things in his search for fulfilment. With the players' help, his quest becomes a roller coaster ride of razzle-dazzle entertainment and seductively dangerous excesses. What Pippin doesn't realize, though, is that the players' only goal is for him to do their Grand Finale. They make sure he fails at everything, so that the finale will be his only remaining opportunity to find perfection. But it's not until the big moment arrives that they tell Pippin what he has to do. They want him to get in a box and set himself on fire – “a glorious synthesis of life and death, and life again!” They want him to commit suicide, live on stage.

The players? They're not some real life troupe. This isn't the Pandemonium Shadow Show, It's not a medieval Manson family taking in young men and murdering them. The players are in Pippin's mind. They are a figment of his imagination (and/or our collective imagination).

Why else would it be sprinkled with anachronisms in the costumes and dialogue, making no pretence at being a period piece, despite its characters' names and being technically set in Charlemagne's France? Because that's just a jumping-off point. Because it's really about here and now. It's about the coming of age, the rites of passage, the lack of role models and guidelines for the young adults of today's society, and the hopelessness that has become more and more prevalent among young people.

Think about it! We create outrageous expectations for our young people and then sabotage their chances at attaining them, asking them to grow up faster with each generation. We rarely offer them role models and we destroy the ones they have. We tell them they can have anything they want, but it's not true. We wonder why murder and suicide among teenagers continues to increase. Maybe Pippin knows why. To some, when everything else is trashed, all that's left is the Grand Finale. But that doesn't have to be the case. You don't have to do extraordinary things to be extraordinary. You don't have to reach the highest high to be worth something. Sometimes succeeding at average, ordinary, everyday life is enough. And you don't have to follow all the rules and get everything “right” to do that.

That's what *Pippin* is about. That's what it means. That's why it's such an important musical.



**PIPPIN**

Book by **ROGER O. HIRSON**      Music & Lyrics by **STEPHEN SCHWARTZ**

Originally produced on the Broadway stage by Stuart Ostrow  
Directed on the Broadway stage by Bob Fosse  
Theo Ending Originally Conceived in 1998 By Mitch Sebastian  
By arrangement with Hal Leonard Australia Pty Ltd  
Exclusive agent for Music Theatre International (NY)

MAIN THEATRE  
19 FEBRUARY - 12 MARCH  
2016

DIRECTED BY | TRENT IVETT  
CHOREOGRAPHED BY ABBY SWANBOROUGH  
MUSICAL DIRECTORS | MATT PEARSON | JULIE WHITING

**BOOK & PAY**  
**(07) 5539 4255**  
www.spotlighttheatre.com.au

**PIPPIN**

PHOTOS by JULIE WHITING

*PIPPIN* is in the final stages of rehearsal finishing off the small-numbered dances, putting everything together and running the show over the next week or so. It will be a really unique experience for the audience – **superb music, fabulous choreography and a spectacular multi-media component and will make for a dark, sexy and highly entertaining tale!**

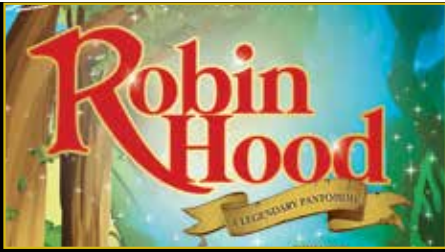
Check out the Tony Award winning revival of *PIPPIN* (link below) and get swept up in the magic : <http://youtu.be/0Xr-9ytgusQ>

***Don't miss out on this extraordinary classic!***

Live on stage 19th February - 12th March

**Book now! [www.spotlighttheatre.com.au](http://www.spotlighttheatre.com.au)**





CONGRATULATIONS TO DIRECTOR TERRI WOODFINE, CAST AND CREW.  
A Legendary Season of Robin Hood "a legendary pantomime" with some stunningly  
memorable performances.

## IMPORTANT NOTICE to ALL MEMBERS

It is absolutely essential to have a quorum at this meeting as Spotlight Theatrical Company has to elect a new President.

Please make every effort to attend.

THE SPOTLIGHT THEATRICAL COMPANY

## HALF-YEARLY GENERAL MEETING

**7.00pm - TUESDAY, 15th MARCH 2016**

TO BE HELD AT 185-187 ASHMORE ROAD, BENOWA

### AGENDA

1. Apologies
2. Minutes of General Meeting held on 17th March 2015
3. Business arising from minutes
4. President's report and overview (to be read)
5. Treasurer's report and overview (to be read)
6. Other reports:
  - Bar
  - Alliance
  - Publicity
  - Library
  - Small Props
  - Building Manager/Security
  - Theatre Hire & Usage/Key Distribution & Registration
  - Fire Warden/Safety
  - Insurance
  - Membership
  - Youth Theatre
  - Front Of House
  - Production
  - Costume Hire
  - Spotlighter Newsletter
  - Programmes
  - Golden Girls
  - Lighting
  - Audio
  - Website

*Please Note: These reports will not be read. Copies will be made available at the meeting.*

7. Election of President
8. Any other business:
9. Date for Annual General Meeting

*Diana Gibson (Secretary)*

PLEASE BRING A SMALL PLATE OF NIBBLES AND ENJOY A DRINK AFTER THE MEETING..

To: **The Returning Officer**  
**The Spotlight Theatrical Company**  
**PO Box 8074**  
**GOLD COAST MAIL CENTRE QLD 9726**



Re: *1/2 Yearly General Meeting – Nomination for President*

I (please print name) ..... hereby declare that I am willing to offer myself for election to the position of President to the Company for the term 2016.

Signed: ..... Date .....

Nominated by: ..... Signature .....

Seconded by: ..... Signature .....

PLEASE NOTE: All nominations must be received in writing by the Returning Officer no later than 24 hours prior to the time for commencement of the meeting.

## **PLAYBILL SUBMISSIONS REQUIRED FOR 2017**

Directors please present your submissions for Musicals, Pantomimes and Plays  
OR OTHER EXCITING SUGGESTIONS  
outlining your ideas for presentation during 2017.

### **APPROXIMATE DATES**

#### **Main Theatre - Musicals**

Mid February/March  
Latter part of May/June  
Late July/August  
Late October/November

#### **Basement Theatre Pantomimes/Plays**

Early January  
Early April  
Late June/July  
Mid September/October

## **Submissions close 30th June 2016**

Please present to: Production Committee  
Spotlight Theatre  
185-187 Ashmore Road, Benowa  
or mail to: Production Chairperson  
Spotlight Theatrical Company,  
PO Box 8074 Gold Coast Mail Centre Q 9726





**JONATHAN WHITLOW** (*Musical Theatre Teacher*)  
**HANNAH CROWTHER** (*Intermediate Teacher*)  
**TERRI WOODFINE** (*Primary Teacher*)  
**DANA WHITE** (*Assistant Teacher*)  
**VAL LEFTWICH** (*YT Administrator*)  
**MARTINA FRENCH / VAL LEFTWICH** (*YT Liaison*)

## The Spotlight Youth Theatre

### CLASSES

**TERMS COMMENCE 30th JANUARY, 2016.**

Times and Fee Structure

Class times subject to change owing to demand.

#### JUNIOR DRAMA

**7-11 years of age**

**Cost:** \$160.00 per term

Saturday 1.30 - 3.00 p.m.

Saturday 3.00 - 4.30 p.m.

#### INTERMEDIATE DRAMA

**10-13 years of age**

**Cost:** \$160.00 per term

Saturday 9.00 - 10.30 a.m.

Saturday 10.30 a.m. – 12.00 p.m.

Saturday 12.00 - 1.30 p.m.

#### SENIOR DRAMA

**12-18 years of age**

**Cost:** \$175.00 per term

Monday 4.00 - 5.30 p.m.

Wednesday 4.00 - 5.30 p.m.

Wednesday 5.30 - 7.00 p.m.

#### SENIOR MUSIC THEATRE

**12-18 years of age**

**Cost:** \$200.00 per term

Monday 5.30 - 7.30 p.m.

Tuesday 4.00 - 6.00 p.m.

Tuesday 6.00 - 8.00 p.m.

#### SENIOR COMBINATION DRAMA/MUSIC THEATRE

**12-18 YEARS OF AGE**

**Cost:** \$320.00 per term

**COMMITMENT TO CLASSES AND PRODUCTION DATES IS  
REQUIRED BY ALL STUDENTS ENROLLED IN CLASSES AT  
SPOTLIGHT THEATRE.**

## YOUTH THEATRE UP DATE

We are almost ready with the first classes commencing Saturday the 30th January. We have had an excellent response to enrolment with in excess of 200 students ready to commence this exciting year.

We have new teachers Jonathan Whitlow, (**FAME** 2009, Royal Caribbean Cruise Lines and recent at Spotlight Theatre as **The Boy from Oz**). Hannah Crowther, (Harvest Rain Theatre Company, and recently playing the role of the memorable Enid Hoops and dedicated Dance Captain of our hilarious season of **Legally Blonde**). Terri Woodfine is our Junior Class teacher assisted by Dana White and Martina French. Terri recently directed our wonderful pantomime **Robin Hood** which was a great success. Everyone is very excited about the coming year at the theatre, which such a great range of teaching staff. Jess Papst has taken sabbatical leave going to Melbourne to perform in the national tour of **Carole King The Songbook of her Life**. Jess will from time to time come to the Gold Coast and do workshops and work with our teachers with an aim to improving the skills of our students.

In some of the classes we still have a few vacancies so please do try and register even if you think you have left it too late. Give Val a call on 0452 501 941 if you would like to join our exciting journey.

**Val Leftwich – YT Administrator**

### ALL TERM FEES PAYABLE TO

SPOTLIGHT THEATRICAL COMPANY

BY CASH, CHEQUE, CREDIT CARD OR DIRECT DEPOSIT TO :

BANK OF QUEENSLAND

BSB 124-086

Account: 22100850

*If you have more than one child attending classes, every child after the first enrolment will receive \$10:00 discount.*

### CONTACT:

Youth Theatre Administrator

VAL LEFTWICH

ph: 0452 501 941

email: val@leftwich.com.au

PENDING ENROLMENTS CLASS SCHEDULE IS SUBJECT TO CHANGE.

# IS CHASING YOUR DREAMS A CRIME?

At the height of the Great Depression, Bonnie Parker and Clyde Barrow went from two small-town nobodies in West Texas to America's most renowned folk heroes and the Texas law enforcement's worst nightmares. Fearless, shameless, and alluring, their electrifying story of love, adventure and crime captured the excited attention of an entire country. Don't miss the most notorious couple in this thrilling musical stage adaption of their real-life story; filled with blues, gospel and rockabilly music, sure to captivate your sense of adventure.

## **What Is the Story of Bonnie & Clyde?**

The story of outlaws Bonnie and Clyde is a part of Americana, but this story is a sunnier version than the usual shoot-'em-up tales. When car trouble (hers) brings Bonnie Parker and Clyde Barrow together, they immediately fall in love. Growing up in dustbowl Texas, Bonnie is a young waitress who wants to be a movie star, and Clyde is a car-loving small-time crook who just wants to crawl out from under the crushing poverty he's known his whole life. Clyde and his brother Buck have been in and out of jail for years, much to the disapproval of Buck's religious wife Blanche, and as their robberies get more and more notorious, they become known as 'The Barrow Gang,' which Bonnie soon joins. When their crimes escalate from robbery to murder, these lovers on the run make national headlines

## **What Is Bonnie & Clyde Like?**

While it has the shootouts and hold-ups that made Bonnie and Clyde famous outlaws, this version of their tale focuses more on the love story between the two title characters than anything else. The pop score by Frank Wildhorn keeps the show from getting too dark, no matter what the subject matter, and allows for plenty of vocal pyrotechnics from its leading players. The show's ensemble numbers are used to explain the circumstances that drove these kids (who were in their early 20s when they died) to their criminal acts.

## **Is Bonnie & Clyde Good for Kids?**

This one gets a V for violence. It's certainly a rosier take on the Bonnie and Clyde story than we've seen in the past, but considering the show opens with intense, rapid (and loud) gunfire that leaves the title stars bloodied and dead in a car, it's not a great choice for little kids. Other than that, there's a to-be-expected amount of blood, considering the subject matter, as well as a prison scene that makes reference to Clyde being sexually assaulted. There's also some semi-nudity and a whole lot of making out, but it's all relatively tame stuff, and should be fine for teens and older.

**Don Kibble** (GOLD COAST)

DRAWING OFFICE SUPPLIES  
PTY LTD ABN 48 873 687 565

for all your: • plan printing • photocopying  
• colour copying • binding • laminating  
email: plans@kibbles.com.au  
ph: 5532 0499  
18 George Street, Southport  
fax: 5532 0714

**BONNIE & CLYDE**

Book By **IVAN MENCHELL**    Lyrics By **DON BLACK**    Music By **FRANK WILDHORN**

Director **BRAD KENDRICK**    Musical Director **BRADY WATKINS**

**MAIN THEATRE 13 MAY - 4 JUNE 2016**

**BOOK & PAY**  
**(07) 5539 4255**  
**www.spotlighttheatre.com.au**

By arrangement with Hal Leonard Australia Pty Ltd Exclusive agent for Music Theatre International (NY)

# Bonnie & Clyde AUDITION Information

Auditions for The Spotlight Theatrical Co's production of the Frank Wildhorn musical **Bonnie & Clyde** will be held Sunday 7th February 2016, in The Basement Theatre, 185 187 Ashmore Rd, Benowa.

Auditionees should come prepared with a resumé and 90 seconds of a similar style of Broadway showtune. You must provide your own backing track (on USB, CD, iPhone) as no repetiteur will be available. No á cappella singing, please. Headshots are welcome but not required. Auditionees should be prepared to dance/move and may be asked to do some cold reading from sides.

All roles are open.

Character Breakdown- (Ages are given as an approximation only).

**BLANCHE BARROW:** A religious woman who disapproves of the criminal lifestyle. Honourable and righteous. Married to Buck Barrow. Female, 25-35 yrs old. Range: G3 - Eb5

**BOB ALCORN:** The best sharpshooter in Texas. Recruited by Frank Hamer, he helps hunt down Bonnie and Clyde. Male, 30-45 yrs old.

**BONNIE PARKER:** A beautiful girl torn between love and fame. Clyde's ambitious, stubborn lover. Female, 18-25 yrs old. Range: G3 - F5

**CAPTAIN FRANK HAMER:** A retired Texas Ranger who joins the hunt for Bonnie and Clyde. Recruited by Governor Ferguson. Male, 45-65 yrs old

**CLYDE BARROW:** A charming small-town boy who craves notoriety. Bonnie's reckless, bold, daring lover. Male, 18-25 yrs old. Range: A2 - C5

**CUMIE BARROW:** A kind woman among those suffering in the Depression. Loyal and selfless. Mother to Clyde and Buck. Female, 40-55 yrs old.

**EMMA PARKER:** Bonnie's widowed mother. Fragile, caring, sensitive. Female, 40-55 yrs old.

**GOVERNOR MIRIAM FERGUSON:** An enforcer of the law and Governor of Texas. Tough and harsh. Female, 40-60 yrs old.

**HENRY BARROW:** A hard-working man, struggling to survive. Humble and quiet. Father of Clyde and Buck. Male, 45-55 yrs old.

**MARVIN "BUCK" BARROW:** Clyde's brother and an outlaw troubled by his wife's distaste for his lifestyle. Adventurous and loyal. Male, 25-35 yrs old. Range: B2 - G4

**PREACHER:** The town's evangelist. Loud, passionate, boisterous. Male, 45-65 yrs old. Range: A2 - C5

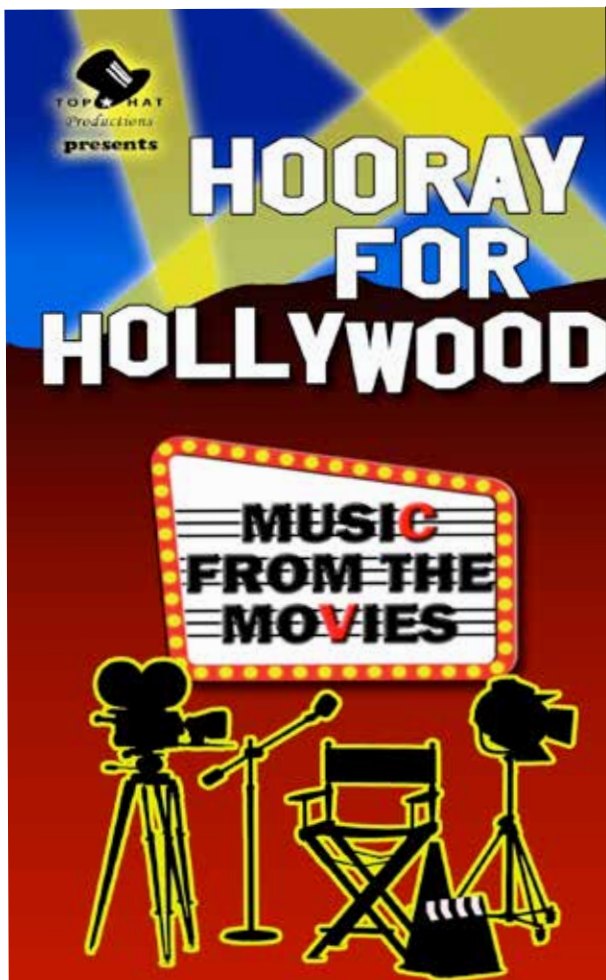
**TED HINTON:** A police officer struggling to separate his feelings from his duties. Kind and honest. Madly in love with Bonnie. Male, 18-25 yrs old. Range: C3 - A4

**YOUNG BONNIE:** Female, 10-14. Range: C#4 - C5

**YOUNG CLYDE:** Male, 10-14. Range: B3 - A5

**ENSEMBLE:** STORE CLERKS; COPS/GUARDS; BANK CUSTOMERS; CHOIR; BREAD LINE FOLKS

**FOR FURTHER INFORMATION CONTACT :auditions@spotlighttheatre.com.au**



# HOORAY FOR HOLLYWOOD!

*(Music from the Movies!)*

**Season: Thurs-Sat 31 March-17 April**  
**DIRECTOR: Kate Peters**

**Don't miss this nostalgic look at the Movies, and Stars of the past 100 years!**

**From the people who brought you HATS The Musical, RUTHLESS The Musical, ISN'T IT ROMANTIC? IN THE MOOD (The 1940s Big Band Show), IN THE MOOD - AGAIN! (The Golden Age of Radio Show) and LET'S MISBEHAVE (The 1920S Jazz Age Party)**

**Grab a ticket to the show that celebrates the best of Hollywood's blockbuster movies!**  
**CALL 5539 4255 to book NOW!**

## ***HOORAY FOR HOLLYWOOD! (Music from the Movies)***

The show features many wonderful movie melodies made famous in the motion pictures we have enjoyed over the past years, with narrative, anecdotes and back projection images of the times.

The show is written and directed by KATE PETERS, well known to Gold Coast audiences for her musical revues at Spotlight's Basement Theatre and other venues over the past years – ***ISN'T IT ROMANTIC?, IN THE MOOD, RUTHLESS The Musical, HATS The Musical, IN THE MOOD - AGAIN, LET'S MISBEHAVE and COCKTAILS WITH NOEL & GERTIE.***

Cast members include Award winners LEIGH HARRISON (*The Pajama Game*), KATRINA LARDNER (*All Shook Up*), MARTINA FRENCH (*The Boy from Oz*), SIMON STONE (*Sweeney Todd*), ARTHUR SHACKLOCK (*South Pacific*), FRANKIE SPEAR (*Snow White*), MARTIN JENNINGS (*Oliver!*), ALI WILBY (*High Society*), MICHAEL SMITH (*In the Mood - Again*), with a brilliant dance ensemble MAKAYLA McGOVERN, TAHLIA TRAECEY, ERYN LARDNER and HAYLEY GREEN.

Songs include:

\* Beauty and the Beast (*BEAUTY & THE BEAST*) \* Hanky Panky (*DICK TRACEY*) \* Love is in the Air (*STRICTLY BALLROOM*) \* I Will Always Love You (*THE BODYGUARD*) \* You Don't Own Me (*THE FIRST WIVES' CLUB*) \* Moon River (*BREAKFAST AT TIFFANY'S*) and many more!

**SEASON: Thursday/Friday/Saturday 31st March, 1-2 April at 7.30pm**  
**Thursday/Friday/Saturday 7-9 April at 7.30pm**  
**Thursday/Friday/Saturday 14-16 April at 7.30pm**  
**Sunday 3, 10, 17th April at 4.00pm.**

**BOOKINGS ARE NOW OPEN ON 5539 4255**

# UPCOMING SHOWS

## • 29 June - 9 July

Spotlight's inGENIEously magical pantomime, **A Lad 'n' His Lamp**.

The whole family will enjoy this wonderful Arabian adventure.

**BOOK NOW (07) 5539 4255**  
or online anytime [www.spotlighttheatre.com.au](http://www.spotlighttheatre.com.au)



## • 12 August - 3 September

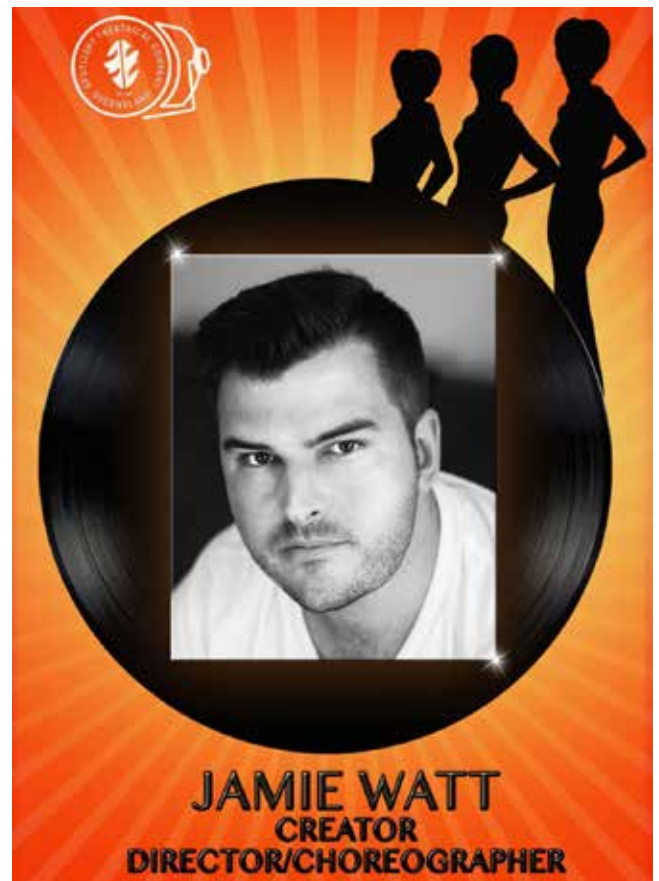
**Higher and Higher the musical** will explode onto the Spotlight Theatre stage!

Meanwhile - meet the director!

**JAMIE WATT** - Creator, Director/Choreographer  
Jamie is a multi-faceted Performer and Director/Choreographer hailing from the Gold Coast, Queensland. His performance passion began

when he auditioned and was accepted into the Arts Centre Gold Coast's Summer School Program under the direction of Robert Young. For the following 10 years Jamie appeared in over 26 productions for the company and worked as In House Productions assistant and Dance Captain for countless productions. In 2009 Jamie toured the country with **BUDDY: The Buddy Holly Story** as a Performer, after which he settled back down on the Gold Coast. In 2011 Jamie was awarded the Gold Coast Area Theatre Award for his performance as CHAD in the musical **ALL SHOOK UP**, which he would later direct and choreograph for Spotlight Theatrical Company in 2012. After a small hiatus from performing Jamie was once again nominated for a GCATA for his work as Emmett Forrest in **LEGALLY BLONDE** for Spotlight Theatrical Company.

*"Music of the Motown Era has long been my passion and I can't think of a better way to celebrate it and all it influenced by staging this exciting theatrical event with the best talent the Gold Coast has to offer. Look out 2016 - Higher & Higher is coming, and it will blow the roof off of Spotlight Theatre".*



# MEMBERSHIP FEES FOR 2016 ARE NOW DUE

The form is below or can be downloaded from:

[http://spotlighttheatre.com.au/Membership/membership\\_form\\_2013.pdf](http://spotlighttheatre.com.au/Membership/membership_form_2013.pdf)



## Our Welcome form for NEW and renewing MEMBERSHIP

(Calendar year Jan 1 to Dec 31)

- Where talent, skills and interests merge

What sort of involvement are you seeking?

### I/we wish to apply for:

- NEW membership (adult) \$10
- RENEWAL (Adult) \$10
- NEW (Youth Under 18yrs) \$5
- RENEWAL (Youth U 18yrs) \$5

### I would also like to be listed as a

- HAT and/or  PET

### Office use only:

Received .....

Entered in database .....

Code issued .....

Date / processed by .....

.....

Year of membership.....

The Spotlight Theatrical Co is among the leading amateur Theatrical producers in Australia. It caters for adult and youth theatre and especially popular Music Theatre. It is well equipped and complies with all Fire, Workplace Health and Safety requirements. But to do this it needs **VOLUNTEERS** aplenty to service its **Audience membership** & patrons.

You may also choose to volunteer flexible time as a -

### SPOTLIGHT 'PET'

**PET** denotes PRODUCTION ENHANCEMENT TEAM and includes, for example, backstage crew, scenery design, art and or construction, property making or acquiring, costume design and or construction, sound or lighting design or operation, makeup and hair, and photography.

or a

### SPOTLIGHT 'HAT'

**HAT** denotes HOSPITALITY ASSISTANCE TEAM. You can choose to be welcoming Front of House and or Bar assistance during scheduled performances.

This is a family-friendly form: All family at one address!

NAME/status.....

Phones: Home.....Mob.....

NAME/status.....Mob.....

NAME/status.....Mob.....

NAME/status.....Mob.....

NAME/status.....Mob.....

POSTAL ADDRESS .....

.....

POSTCODE .....

Email .....

I submit the total sum of \$.....

Signature:

- MEMBER BENEFITS INCLUDE -
- An exclusive code for online offers
- "The Spotlighter" monthly E- Newsletter
- Privilege for theatre tickets
- Eligibility for special offers
- Discount on party costume hire
- Promotional events
- Social events
- Some indemnity when working in or on a Production
- Renew online (from 2014)

Follow us on Facebook and Twitter.

[www.spotlighttheatre.com.au](http://www.spotlighttheatre.com.au)

### Location! Location! Location!



Spotlight Theatre Complex comprises of two highly equipped theatres, Green room, a costume-hire & retail outlet, 'Youth Theatre' facilities, bookings centre, store-rooms and workshop facility. On-premises limited parking.

All activities situated conveniently in the heart of the Gold Coast.

Mail to Spotlight MEMBERSHIP,  
PO Box 8074 GCMC Q. 9726 or visit

The Spotlight Theatrical Company,  
185-187 Ashmore Road, Benowa, Qld. 4217

Ph. Shop 07 5539 4700

Ph. Theatre/Bookings 07 5539 4255

Copy of Constitution and other rules and conditions available on request.

Public Liability Insurance held.



**Carpet Cleaning & Pest Control**

**Gary Matheson**

**Proprietor**

DISCOUNT FOR SPOTLIGHT MEMBERS

**Stain Removal Specialist, Steam or Dry Clean**

PHONE: (07) 5576 2820

MOBILE: 0419 756 127

**YOUR DRY WAY PROFESSIONAL**



FEELING HOT!  
DO YOU KNOW?

Ice cream can be purchased at Spotlight ...  
ask one of our friendly volunteers serving behind the bar!



**Joel Beskin's 'Theatre Roundup'**

is now on Air every week on Tuesdays.

Tune in to 4CRB 89.3FM between 2.35pm and 3pm  
for Community Theatre News and

**Kate Peter's 'Showbiz Buzz'**

will air on the same station between 2.30 & 3.00pm  
Friday afternoons.

**BRONZE  
CORPORATE  
SPONSOR**



Securing Peace Of Mind

Insurance Brokers  
For all your insurance  
requirements contact Glenda  
on (07) 5538 8988

**Thank You to John Taylor BMus**

for a significant sponsorship towards Spotlight Theatre sound systems  
m: 0419 676 213 e: john@jtap.com.au www.jtap.com.au



- \* Custom Cables
- \* Multicores
- \* Show Automation
- \* Installations
- \* CCTV & MATV
- \* Theatre Production
- \* School Musicals
- \* Audio Operators
- \* Radio Mic Hire
- \* Equipment Sales

– SPONSOR –

**Spotlight Theatre acknowledges and thanks**



**Gold Coast City Council**

**for their substantial Rate donation.**

## CONTACT INFORMATION – SPOTLIGHT COUNCILLORS 2015-2016

**Acting President** *Patricia Drew* e: patsydrew@bigpond.com

**Secretary:** *Diana Gibson* e: theatreyeme@gmail.com

**Treasurer:** *Michelle Edwards* e: michelle@spotlighttheatre.com.au

### Councillors

*Tony Alcock* e: mailbox@spotlighttheatre.com.au

*Brock Dunstan* e: brockdunstan@hotmail.com

*Martina French* e: davidandtina@bigpond.com

*Erica Graham* e: erica@spotlighttheatre.com.au

*Shirley King* e: shirley@spotlighttheatre.com.au

*Val Leftwich* e: val@leftwich.com.au

*Jamie Watt* e: j\_j\_watt@hotmail.com

*Terri Woodfine* e: terri\_woodfine@hotmail.com

### Production Committee

**Chair Person:** *Tony Alcock* e: mailbox@spotlighttheatre.com.au

**Committee:** *John Davidson, Josh Lovell, Jess Papst, Matt Pearson and Terri Woodfine*

**Theatre Technical Consultant** *Michael Sutton*      **Lighting Co-ordinator** *Shaun Wilson*

**Library** *Matt Pearson* e: matt.pearson@live.com.au

**Small Props** *Terri Woodfine* e: terri\_woodfine@hotmail.com

**Grants** *Duncan Sims*

**Insurance** *Glenda Kusters* Insurance matters e: glenda@leaib.com.au

**Fire & Security Contacts:** *Tony Alcock, Brock Dunstan, Jamie Watt*

**Administration Liaison/Group Bookings/Membership Coordinator/ Royalties/Theatre Hire & Usage/Key Dist.  
& Registration/Gift Coordinator/Volunteer FoH Roster Coordinator/Liaison**

*Michelle May* Administration W 07 5539 4255

**Publicity** e: publicity@spotlighttheatre.com.au *Tony Alcock*

**Social Media** *Brock Dunstan & Jamie Watt*

**Costume Hire** *Michelle May* W 5539 4700      *Tony Alcock – Costume Coordinator –* W 5539 4255

**Youth Theatre Teachers** e: youth@spotlighttheatre.com.au

*Jonathan Whitlow (Musical Theatre Teacher) Hannah Crowther (Intermediate Drama Teacher)*

*Terri Woodfine (Junior Drama Teacher) Dana White (Assistant)*

**Youth Theatre Administrator** *Val Leftwich* e: val@leftwich.com.au

**Youth Theatre Liaison Officer** *Martina French & Val Leftwich*

**Golden Girls Liaison** *Noni Buckland* e: noni.buckland@bigpond.com

**Sponsorships** *Erica Graham* e: erica@spotlighttheatre.com.au

**Bar Manager - RMLV** *Duncan Sims*

**Charity Night Co-ordinator** *Helen Maden* e: hpmaden2@gmail.com

**G.C. Theatre Alliance Representative** *Joel Beskin / Erica Graham*

**Webmaster** *Michael Thomas* e: stc\_webmaster@showbizaustralia.com

**Programmes** *Chris Dickinson* e: chris@spotlighttheatre.com.au

**Spotlighter Editor** *Shirley King* e: shirley@spotlighttheatre.com.au

185-187 Ashmore Road Benowa PO Box 8074 GC Mail Centre Q 9726 P: 07 5539 4700

e: mailbox@spotlighttheatre.com.au youth@spotlighttheatre.com.au

Online Booking: www.spotlighttheatre.com.au or Phone 5539 4255

www.spotlight-costume-hire.com