

Official Newsletter of the
SPOTLIGHT THEATRICAL COMPANY

Fostering an outlet for creative youth and community, while seeking to produce vibrant, quality entertainment that enriches, engages and educates.

February 2017



INSIDE:

IMPORTANT NOTICE – QUORUM REQUIRED:

1/2 yearly GENERAL MEETING 28TH MARCH - 7pm - p3

TO VOTE make sure your Membership is current.

AUDITION INFORMATION - Planet of the Nebulons; Les Miserables; 9 to 5

UPCOMING SHOWS

REPORTS

and more ...

SEASON: 10 FEB - 4 MAR



**SATURDAY
NIGHT FEVER**
THE MUSICAL

TICKETS NOW ON SALE!

(07) 5539 4255 OR SPOTLIGHTTHEATRE.COM.AU

SATURDAY NIGHT FEVER IS RATED MA15+ FOR STRONG ADULT THEMES AND STRONG COARSE LANGUAGE.



*Spotlight Theatre is a
foundation member of the
Gold Coast Theatre Alliance*

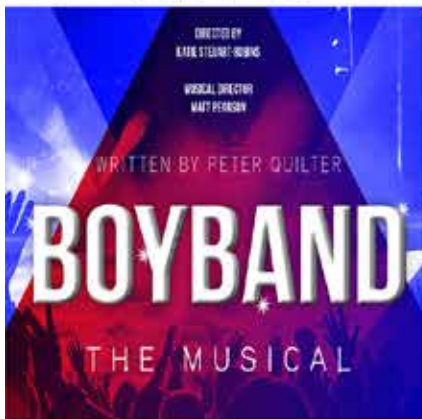




JAN 4 - 14



FEB 10 - MAR 4



MAR 24 - APR 9

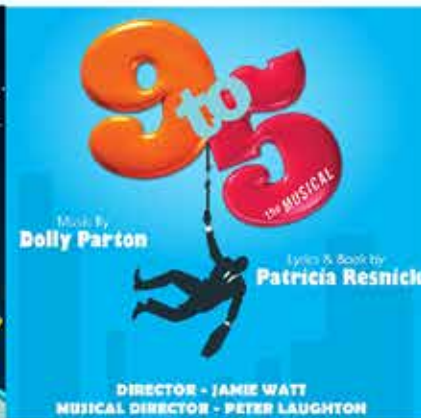
WAITING
ON CONFIRMATION OF
AVAILABILITY OF MUSICAL
FROM LICENSOR..

TBA

MAY 5- 27



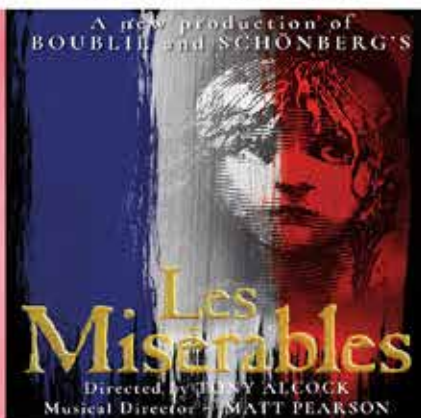
JUN 28 - JUL 8



JUL 28 - AUG 19



SEP 15 - OCT 1



OCT 20 - NOV 11

AUDITIONS

for 2017 Playbill Productions
are as follows:

PLANET OF THE NEBULONS
March 5

LES MISERABLES
April 2 & 3

9 TO 5 THE MUSICAL
MAY 7

TAKE A CHANCE ON ME
June 18

For further information
please check our
website

www.spotlighttheatre.com.au

or

email

mailbox@spotlighttheatre.com.au

Members are advised that The Spotlight Theatrical Company
HALF YEARLY GENERAL MEETING
will be held on TUESDAY, 28 MARCH 2017, commencing at 7.00pm SHARP
at Spotlight Theatre, 187 Ashmore Road, Benowa

All members are urged to attend.

PLEASE NOTE: To have voting rights you *must be financial and have been a member the previous year.* The bar will be open for drinks after the meeting and if you wish to stay for a drink, tea or coffee and a chat, a small plate of supper would be appreciated.

AGENDA

Apologies

Minutes of previous Half Yearly General Meeting held on 17 March 2016

Matters arising from Minutes

President's report

Treasurer's Report

Other reports

Notice of Motion

1. Amendment of Constitution

Pursuant to the requirements of section 29(a) of the Collections Act 1966 ("the Act"), the Chairperson tabled a copy of a letter dated 6 December 2016 from the Department of Justice and Attorney-General which contained the approval for the following proposed amendments.

Moved Patricia Drew, Seconded Shirley King

that pursuant to Clause 31 of the Constitution, the Constitution be altered as follows:

Clause 12 (a) (ii) Four (4) Councillors

Clause 15. The Council shall meet not less frequently than once a month. The quorum shall be five (5).

Clause 17. (a) and (b) be deleted and Clause 17 be amended to read as follows:

17. Any member of the Council who is absent without sound reason from three consecutive meetings of the Council shall be deemed to have relinquished office. Casual vacancies shall be filled by appointment by the Council of the Vice President to Acting President should the Presidency fall vacant and of any member of the Company to be Acting Secretary, Acting Treasurer or Councillor as the case may be until the end of the Council term of office.

Clause 21 (b) be deleted and replaced with 21 (c).

Clause 22 to be amended as follows:

22. Fourteen days written notice of the Annual General Meeting shall be given and seven days written notice of the special business requiring attention shall be given of Special General Meetings.

Clause 23 to be amended to read as follows:

23. The quorum at all general meetings of the Company shall be seventeen (17) Financial and Life Members. A simple majority shall be required before any motion shall be declared carried. The President, subject to a motion of dissent, shall decide upon any dispute as to the interpretation of the Constitution and the President shall decide any dispute as to the standing orders. Otherwise the rules of parliamentary debate shall apply.

2. Certification of Altered Constitution

Moved Patricia Drew, Seconded Shirley King

that should the above resolution be passed, it is resolved that

(a) The President and Secretary certify the copy of the resolution

(b) The President and Secretary certify the copy of the amended constitution as true and correct and signed under the seal of The Spotlight Theatrical Company.

(c) That both certified documents together with a copy of the minutes from the meeting where the change was approved certified as a true and correct copy by the President and Secretary of The Spotlight Theatrical Company, be delivered to Julianne Shearer, Cronin Shearer Lawyers with instructions to forward to the Office of Fair Trading, Department of Justice and Attorney General.

General Business.

If any person wishes to add an item to the Agenda, this must be put in writing, and seconded by another financial member. Any additions must be received by the Secretary seven (7) days prior to the meeting.

Shirley King
Hon. Secretary

Congratulations Terri Woodfine, Production Team and Cast of *Rapunzel* on a lively and highly successful opening Pantomime for 2017.

Terri with two younger cast members.

PHOTOS BY NANGA MAI PHOTOGRAPHY



A hairy fairy tale

Rapunzel

Written & Directed by TERRY WOODFINE

A Family Pantomime



**BRONZE
CORPORATE
SPONSOR**

LEA

Securing Peace Of Mind

Insurance Brokers
For all your insurance
requirements contact Glenda
on (07) 5538 8988

Don Kibble (Gold Coast)

Drawing Office Supplies Pty Ltd

18 George Street, Southport 4215 Ph: 0755 320 499

Email: plans@kibbles.com.au Web: www.kibbles.com.au Est.1977

Plan Printing, Photocopying & Binding, Colour Copying, Colour and Black & White Scanning

Plan Reductions & Enlargements, Laminating,

Plan Filing Systems, Drafting Supplies and Plotting Media

The Spotlight Theatrical Company
is seeking the services of a
"Grant Savvy Person" to take on the role of our

Grants Officer.

Are YOU able to help us?

This requires special skills and knowledge of the operation for
seeking Grants for Not-for-Profit organisations.

If you can help or know of someone with these capabilities
who may be willing to take on this role,
please phone **Duncan 0402 260 770**
or email: dunlo@ozemail.com.au

PLAYBILL SUBMISSIONS REQUIRED FOR 2018

Directors please present your submissions for Musicals, Pantomimes and Plays
OR OTHER EXCITING SUGGESTIONS
outlining your ideas for presentation during 2018.

APPROXIMATE DATES

Main Theatre - Musicals

Mid February/March
Latter part of May/June
Late July/August
Late October/November

Basement Theatre Pantomimes/Plays

Early January
Early April
Late June/July
Mid September/October

Submissions close 30th June 2017

Please present to: Production Committee
Spotlight Theatre
185-187 Ashmore Road, Benowa
or mail to: Production Chairperson
Spotlight Theatrical Company,
PO Box 8074 Gold Coast Mail Centre Q 9726

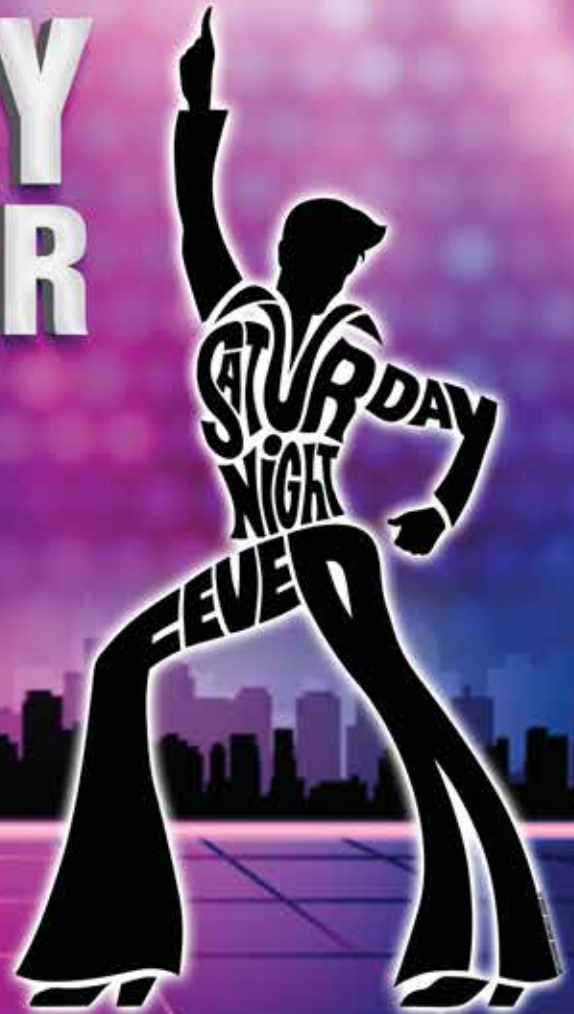
SATURDAY NIGHT FEVER

THE MUSICAL

DIRECTED & CHOREOGRAPHED BY
CLAY ENGLISH

MUSICAL DIRECTION BY
JULIE WHITING

BASED ON THE PARAMOUNT/RSO FILM AND
THE STORY BY NIK COHN. ADAPTED FOR THE STAGE
BY ROBERT STIGWOOD AND ASSISTED BY BILL OAKES.
EDITED BY RYAN MCBRYDE. BY ARRANGEMENT WITH
DAVID SPICER PRODUCTIONS WWW.DAVIDSPICER.COM.AU



FEBRUARY 10th to MARCH 4th

BOOKINGS 07 5539 4255

or online: www.spotlighttheatre.com.au



Joel Beskin's 'Theatre Roundup'

is now on Air every week on Tuesdays.

Tune in to 4CRB 89.3FM between 2.35pm and 3pm
for Community Theatre News and

Kate Peters' 'Showbiz Buzz'

will air on the same station at 2.15pm Friday afternoons.

Spotlighter Deadline – 19th of each month

Please forward articles and pics to shirley@spotlighttheatre.com.au

PRESIDENT'S REPORT

Well the first month of 2017 year has flown past at the theatre. We started the year with our pantomime **Rapunzel** written and directed by one of our Youth Theatre teachers, Terri Woodfine. I was lucky enough to get to see a few shows and the energy and enthusiasm of the young audiences when they had to "Boo" the wicked witch and to "call" Tabby to protect the cheese added to the excitement of the show. The cast did very well engaging the audience and getting the young ones to participate. Well done to all involved to start the year off so well.



The Main Theatre is now in final preparation for the Blockbuster **Saturday Night Fever** directed by Clay English which Opens on Friday 10th February. It's time to get your dancing shoes on and make sure you don't miss this musical. Tickets are available Online Now or in person or by phone at Costume Hire.

Rehearsals have commenced for **Boy Band** which is our next production in the Basement Theatre. Youth Theatre commenced on Monday 23rd January and I welcome all new and returning students.

Well done to Val and her team, making sure Orientation Day ran so smoothly.

We are pleased that we have secured the teachers for another year and look forward to seeing all our students develop their unique skills.

Three of our wonderful volunteers were recognised by the Theatre Alliance for their outstanding service to the Arts and Spotlight Theatre in particular. Congratulations, well done and thank you to Patsy Drew, Shirley King and Butch Bernet on their contribution to Spotlight and the tireless work they do behind the scenes so that we can continue to flourish.

We have introduced **eftpos facilities** to the **Bar** this year after many requests from our Patrons and we have increased the choice of **Ice Creams** – now offering **Cornettos** and **Milo Cups**.

I hope to see many of you at our shows this year.

Best Regards

Duncan Sims
President



SUMMER IS HERE!
DO YOU KNOW?



Ice cream can be purchased at Spotlight ...
ask one of our friendly volunteers!

SPOTLIGHT ON YOUTH THEATRE

ANDREW COCKROFT-PENMAN (Senior Drama Teacher)
JONATHAN WHITLOW (Musical Theatre Teacher)
HANNAH CROWTHER (Intermediate Teacher)
TERRI WOODFINE (Primary Teacher)
JACY MOORE (Film & TV Teacher)
VAL LEFTWICH (YT Administrator)
MARTINA FRENCH / VAL LEFTWICH (YT Liaison)

Happy New Year to everyone.

January is our busiest month of the year and we have had many new students join Spotlight.

Saturday 21st January was Orientation Day and it was lovely to see so many new students.

As is usual our **Junior Drama** classes, which are being taught by Terri Woodfine and Hannah Crowther, are full.

Intermediate classes being taught by Hannah Crowther and Terri Woodfine are quite full but these are spread over three classes rather than two.

The **Senior Music Theatre** taught by Jonathan Whitlow and **Drama** classes being taught by Andrew Cockroft-Penman and Terri Woodfine are very popular and some of them are almost full.


The new **Junior Music Theatre** class is very popular and it is now full. This new class takes in **Drama**, **Music Theatre** and **Voice** and will be very interesting over the year. It will be taught by several of our teachers. It is an effort to close the gap between **Intermediate** and **Senior**.

We have enrolled several children who, having seen the pantomime **Rapunzel**, have decided they would like to try "acting" themselves. The pantomime was a great success, being enjoyed by children and adults alike.

The whole staff of the **Junior Theatre** are really looking forward to teaching the students and having fun. We are lucky at Spotlight to have so much talent and the new students will enjoy the journey I am sure.

Valerie Leftwich

– *Spotlight Theatre Youth Administrator*



**SPOTLIGHT
YOUTH THEATRE**

Performance skills training
for young people
aged 18 and under

Spotlight Theatre facilitates a fun
and supportive environment
with professionally experienced,
highly qualified theatre educators.

Make friends for life
while developing the skills
for a lifetime. It's time to shine.

youth@spotlighttheatre.com.au
(07) 5539 4255
www.spotlighttheatre.com.au

**ALL TERM FEES PAYABLE TO
THE SPOTLIGHT THEATRICAL COMPANY
BY CASH, CHEQUE, CREDIT CARD OR
DIRECT DEPOSIT TO :
BANK OF QUEENSLAND
BSB 124-086 Account: 22100850**

**If you have more than one child attending
classes, every child after the first enrolment
will receive \$10:00 discount.**

**CONTACT: Youth Theatre Administrator,
VAL LEFTWICH
ph: 0452 501 941
email: val@leftwich.com.au**



DIRECTED BY
KATIE STEUART-ROBINS

MUSICAL DIRECTOR
MATT PEARSON

WRITTEN BY PETER QUILTER

BOYBAND

THE MUSICAL

AN AMATEUR PRODUCTION BY ARRANGEMENT WITH ORIGIN™ THEATRICAL, ON BEHALF OF SAMUEL FRENCH, LTD.

24
MAR
-
9
APR

BOOK AND PAY TODAY AT:
PHONE: 07 5539 4255
WWW.SPOTLIGHTTHEATRE.COM.AU

BASEMENT
24 MARCH - 9 APRIL 2017

BOYBAND - The Musical follows the turbulent chart-topping rise and fall of fame of fictitious boyband *Freedom*.

Featuring songs from favourite boy bands such as *Take That*, *The Backstreet Boys*, *Westlife* and more; it takes a lighthearted look at the grit behind the glamour of the pop industry. Manufactured by the corrupt Wayland, they have little independence and must retain a wholesome image for their teenage fans who buy their albums and make their manager money. However, what starts out as fun — female adoration, photo shoots, stays in hotels — quickly becomes tiresome and tensions arise.

As the band begins to self destruct, only fast thinking can keep the five boys together. Directed by Katie Steuart-Robin, Musically Directed by Matt Pearson and Choreographed by Erin Brummage the Cast is now well into rehearsals and looking forward to Opening Night on the 24th March.

Thank You to John Taylor BMus

for a significant sponsorship towards Spotlight Theatre sound systems
m: 0419 676 213 e: john@jtap.com.au www.jtap.com.au



- * Custom Cables
- * Multicores
- * Show Automation
- * Installations
- * CCTV & MATV
- * Theatre Production
- * School Musicals
- * Audio Operators
- * Radio Mic Hire
- * Equipment Sales



Gold Coast Theatre Alliance Launch and Lunch was held 21st January at the Vikings Surf Life Saving Club Currumbin where DISTINGUISHED SERVICE AWARDS – GCTAI HEROES 2016 were presented.

Below: Some of the Award Winners with presenters: Patron Lex Bell (Left) and President Deborah Joy Leigh-Russell (Right). (In alphabetical order); Wendy Barnes - Gold Coast Little Theatre; Peter Barrett - Tugun Theatre Company; Gail Barrett - Tugun Theatre Company; Butch Bernet – Spotlight Theatrical Company; Hugh Brophy – Gold Coast Little Theatre; Margaret Bryden – QTOP; Colin Crow - Javeenbah Theatre Company; Patsy Drew – Spotlight Theatrical Company; Gary Johns – Tweed Theatre Company; Shirley King - Spotlight Theatrical Company; Bev Lloyd – Gold Coast Little Theatre; Jillian Rawlings - Tugun Theatre Company; Julanne Shearer – Gold Coast Little Theatre; Brenda Warren - Tugun Theatre Company; Doug Williams - Tweed Theatre Company.

THE SPOTLIGHT THEATRICAL COMPANY PROUDLY PRESENTS

PLANET OF THE NEBULONS

A STELLAR PANTOMIME

SPACE... THE FINAL FUN-TIER

GREETINGS SPACE TRAVELLER. YOUR COSMIC ADVENTURE BEGINS HERE!

THIS AUDITION PACK CONTAINS ALL OF THE INFORMATION YOU NEED TO BLAST OFF, AND EXPLORE...

THE PLANET OF THE NEBULONS!

AUDITION PACK

PLANET OF THE NEBULONS A STELLAR PANTOMIME

Plot Summary

Cosmo is missing! Young Billy and his wacky uncle Albert must travel through time and space to rescue their prized pooch, but not before encountering aliens, evil robots, and trans-dimensional space monsters.

Meanwhile, the evil Lord Ender plans to seize the mysterious Galactic Orb and take control of the entire universe, with the help of his bumbling companions Mac and PC.

Our only hope is an innocent, alien girl named Starla. Can Billy and uncle Albert retrieve the canine Cosmo? Will Lord Ender unlock the infinite power of the Galactic Orb? Has Starla got what it takes to save the universe? Find out in this epic tale of cosmic adventure!

Characters

Billy (Male): A boy of the present day. Loves technology, science, and space.
Aged 10-15ish.

Uncle Albert (Male): Billy's uncle. A mad genius with a passion for science.
Mature Aged, 18-50ish.

Cosmo (Female): Albert's pet dog. Spaceship pilot, and lover of dog treats.
Aged 15+.

Starla (Female): An alien from the Planet of the Nebulons. Heroic, yet naive.
Aged 15+.

Glob (Male): Starla's brother. Knows the future but doesn't know much else.
Aged 15+.

Lord Ender (Female): Evil Overlord of the Nebulons. Must be stopped!
Aged 16+

Mac & PC (Male): Two bickering robots. Lord Ender's bumbling personal assistants.
Aged 15+.

Luna Lightyear (Female): Television presenter for every channel in the galaxy.
Mature Aged, 18-50ish

Seven-11 (Male or Female): A sassy robot. Doubles as a convenience store.
Aged 12+.

Ensemble: Billy's human friends; the Nebulons; Cosmo's ship crew.
Aged 12+.



Auditions

Auditions will take place on the **5th of March**.

Once you have completed and submitted the audition registration form (included with this pack), you will be given an audition slot. This is where you get to show us your vocal ability. Even if you're not the most confident singer, we still want to see what you can do. Pick a song that you are comfortable with, or one you enjoy singing along to.

We understand that auditions can be a nerve-wracking process, and we will attempt to make the experience as fun and inviting as possible.

Time	Location	Activity	What to bring
9:30am-10:00am	Spotlight Main Theatre	Greetings and warm up (Aiden)	-Comfortable clothing that does not restrict your movement -Water bottle
10:00am-11:00am	Spotlight Main Theatre	Open Dance Call (Katie)	-Comfortable clothing that does not restrict your movement -Water bottle
11:00am-12:00pm	Spotlight Main Theatre	Open Ensemble Audition Improv Games (Aiden + Terri)	-Comfortable clothing that does not restrict your movement -Water bottle -A sense of play
12:30pm - onwards	Spotlight Main Theatre	Closed Auditions (Aiden + Terri)	-An instrumental backing track for your chosen song.

Pantomime is supposed to be silly and over-the-top, so have fun with your audition!

After the audition process is complete, successful applicants will be contacted ASAP with callback information.

The season runs from the **28th of June** to the **8th of July**, with performances twice daily at **10:30am** and **2:00pm**

For any further information, please do not hesitate to contact us at:
spotlight.nebulons@gmail.com



Audition Registration Forms available for download on the Spotlight web site www.spotlighttheatre.com.au under Audition Menu.



LES MISÉRABLES is the world's longest running musical and has been seen by over 70 million people in 44 countries and produced in 22 languages. It is one of the most popular musicals ever written and has gone on to break box office records around the world, winning more than 125 major awards along the way. The musical further inspired filmmakers to make the movie version which won three Oscars, three Golden Globes and four BAFTA awards, and went on to become one of the most successful musical films ever made.

The show will run at Spotlight Theatre from 18th October to 11th November 2017.

All prospective Auditionees will be sent an audition pack which will include an application form. On return of this form you will then be sent the appropriate music, from the show, for your audition and a time. Individual auditions will be held at 5 minute intervals.

**Further information & FAQ's will be included in the audition pack.
Contact us on spotlightlesmis2017@gmail.com**

IMPORTANT NOTE:

Although auditions are in April, rehearsals are not scheduled to begin until 30th July 2017.

General Audition

Sunday April 2nd from 6 pm

Young Cosette, Eponine & Gavroche Audition

(These roles will be double cast)

Monday April 3rd from 4 pm

Call Backs

Tuesday 4th & Wednesday 5th April

Director – Tony Alcock

Musical Director – Matt Pearson

Principal Roles

Jean Valjean (Dramatic Tenor/
Baritone Ab2-B4)
Inspector Javert (Baritone F2 –F#4)
Fantine (lyric mezzo-Soprano Gb3-Eb5)
Marius (Tenor A2-Ab4)
Eponine (Mezzo-Soprano F3-E5)
Cosette (Soprano Bb3-C6)
Enjolras (Tenor/ Baritone A2-G#4)
Thenardiere (Comic Baritone G#2-G4)
Mdm. Thenardiere (Contralto G#3-D5)
Gavroche (Boy Soprano) – (plays 10-12)

Featured Roles/ Ensemble

(All minor roles will be cast from the ensemble)

Bishop of Digne (Baritone A2-E4)
Young Cosette (Treble)
Young Eponine (Treble)
Bamatabois
**Grantaire/Brujon/Babet/Combeferre/
Feuilly/ Courfeyrac/Prouvaire/Lesgles/
Fauchelevent/
Male Ensemble – Female Ensemble**

DIRECTOR/CHOREOGRAPHER
JAMIE WATT



MUSICAL DIRECTOR
PETER LAUGHTON

AUDITION ANNOUNCEMENT

The Creative Team is searching for a high energy, diverse, triple threat Community Theatre cast covering full vocal and dance ranges to performing in this exciting Tony Award nominated Musical.

The musical is based on the 1980 movie "9 to 5," starring Dolly Parton, Jane Fonda and Lily Tomlin. Set in the late 1970s, three female co-workers, pushed to boiling point, concoct a plan to get even with their "sexist, egotistical, lying, hypocritical bigot" boss.

Please prepare TWO songs, one up-tempo one ballad that fit the style of musical and show full vocal range and dynamic. VERSE AND CHORUS ONLY PLEASE. Accepted musical accompaniment will be on CD, iPHONE, MP3 or USB.

****NO ACAPELLA AUDITIONS (without backing) WILL BE ACCEPTED****

Auditions are by appointment only. An individual audition time will be allocated.

REHEARSALS COMMENCE 10th MAY 2017 and will be scheduled Sunday –Thursday (not all roles required all days)

AUDITION DATES: SUNDAY 7th MAY

DANCE AUDITION (Dancers only) 9am – 10am

**MOVEMENT AUDITION (For those auditioning for Principal/Ensemble/Vocal Backing parts)
10am – 11am**

Spotlight Main Stage Theatre

(Please note that dance/movement audition is **compulsory** for all auditionees)

Please arrive in appropriate clothing and footwear (jazz shoes), bring a towel, water and deodorant.

VOCAL AUDITIONS 12pm onwards in 5 minutes allotted appointments

(Please note that a vocal audition is **compulsory** for all auditionees)

CALLBACKS WILL BE HELD ON MONDAY 8th MAY IF REQUIRED

SEASON OPENS July 28th – August 19th

Season Dates:

Previews 26,27 July

Evening Shows: 28,29 July 3,4,5,10,11,12, 17,18,19 August

Matinees: 6, 13 August

**To Register for an audition and/or further information:
ninetofiveauditions@outlook.com**

DIRECTOR/CHOREOGRAPHER
JAMIE WATT



MUSICAL DIRECTOR
PETER LAUGHTON

CASTING REQUIREMENTS

Violet

The company's Head Secretary and Mr. Hart's Administrative Assistant, she is a single mother and typically stands up for what she believes in.

Gender: female Age: 40 to 50 Vocal range top: D5 Vocal range bottom: F3

Doralee

A young, sexy spitfire who works at Mr. Hart's office. She is proof that there is more to a woman than just her looks.

Gender: female Age: 20 to 30 Vocal range top: E5 Vocal range bottom: G3

Judy

The "new" girl at the firm, she has been burned by her husband's affair and is searching for personal empowerment. Insecure, determined, and hopeful.

Gender: female Age: 30 to 35 Vocal range top: F5 Vocal range bottom: Ab3

Franklin Hart

One of the firm's executives and a notorious chauvinist. He is capable of faking charm but usually shows his true colours as an arrogant, self-absorbed boss.

Gender: male Age: 35 to 50 Vocal range top: Gb4 Vocal range bottom: C3

Roz Keith

The attentive office gossip queen and snitch. She has an unrequited love for Mr. Hart and will do anything she can to win his approval.

Gender: female Age: 35 to 45 Vocal range top: C5 Vocal range bottom: G3

Joe

A handsome, young office accountant. Genuine and nice, and smitten with Violet.

Gender: male Age: 25 to 35 Vocal range top: G4 Vocal range bottom: B2 (Also Appears in Ensemble)

Dwayne

Doralee's attractive husband. He is very supportive of her professional pursuits.

Gender: male Age: 25 to 30 Vocal range top: G4 Vocal range bottom: E2 (Also Appears in Ensemble)

Josh

Violet's awkward teenage son.

Gender: male Age: 15 to 18 (Also Appears in Ensemble)

Missy

Franklin Hart's wife, clueless to her husband's true nature.

Gender: female Age: 20 to 35 (Also Appears in Ensemble)

Maria

A young and vibrant secretary in Hart's office.

Gender: female Age: 20 to 30 Vocal range top: D5 Vocal range bottom: F4 (Also Appears In Ensemble)

Dick

Judy's soon-to-be ex-husband. An average guy, he is sporting a little less hair and a little more paunch than he did ten years ago.

Gender: male Age: 35 to 45 (Also Appears In Ensemble)

Kathy

A secretary in Hart's office with a tendency to gossip.

Gender: female Age: 30 to 40 Vocal range top: D5 Vocal range bottom: G4 (Also Appears In Ensemble)

Margaret

A secretary in Hart's office with a tendency to drink.

Gender: female Age: 30 to 40 (Also Appears In Ensemble)

Tinsworthy

Franklin Hart's boss and Chairman of the Board. A good man, who may be wiser to Hart's ways than he lets on.

Gender: male Age: 50 to 65 (Also Appears in Ensemble)

Ensemble

Office employees, police officers, hospital employees.

Renew or Join!



2017 MEMBERSHIP TO THE SPOTLIGHT THEATRICAL COMPANY IS DUE NOW.

Become
a **SPOTLIGHT
MEMBER**
Save \$6 on your Show
Ticket **PLUS** Costume
Hire & other
benefits.

ONLY

\$10 pa Adults

\$5 pa Youth

(under 18 yrs)

ARE YOU A FINANCIAL SPOTLIGHT MEMBER?

TO TAKE PART IN OUR SHOWS, VOTE AT MEETINGS & ENSURE
YOU RECEIVE MEMBER PRICES AND DISCOUNTS

YOU NEED TO

RENEW / JOIN NOW

Forms available **HERE**.

OR the Membership form can be downloaded from:

[http://spotlighttheatre.com.au/Membership/
membership_form_2013.pdf](http://spotlighttheatre.com.au/Membership/membership_form_2013.pdf)

OR visit/phone

Costume Hire at
Spotlight Theatre

07 5539 4255

**BECOME A
SPOTLIGHT
VOLUNTEER**



Our Welcome form for NEW and renewing MEMBERSHIP

(Calendar year Jan 1 to Dec 31)

- Where talent, skills and interests merge

What sort of involvement are you seeking?

I/we wish to apply for:

- NEW membership (adult) \$10
- RENEWAL (Adult) \$10
- NEW (Youth Under 18yrs) \$5
- RENEWAL (Youth U 18yrs) \$5

I would also like to be listed as a

- HAT and/or PET

Office use only:
 Received
 Entered in database
 Code issued
 Date / processed by

 Year of membership.....

The Spotlight Theatrical Co is among the leading amateur Theatrical producers in Australia. It caters for adult and youth theatre and especially popular Music Theatre. It is well equipped and complies with all Fire, Workplace Health and Safety requirements. But to do this it needs VOLUNTEERS aplenty to service its Audience membership & patrons.

You may also choose to volunteer flexible time as a -

This is a family-friendly form: All family at one address!

NAME/status.....

Phones: Home.....Mob.....

NAME/status.....Mob.....

NAME/status.....Mob.....

NAME/status.....Mob.....

NAME/status.....Mob.....

POSTAL ADDRESS

.....

POSTCODE

Email

I submit the total sum of \$.....

Signature:

SPOTLIGHT 'PET'

PET denotes PRODUCTION ENHANCEMENT TEAM and includes, for example, backstage crew, scenery design, art and or construction, property making or acquiring, costume design and or construction, sound or lighting design or operation, makeup and hair, and photography.

or a

SPOTLIGHT 'HAT'

HAT denotes HOSPITALITY ASSISTANCE TEAM. You can choose to be welcoming Front of House and or Bar assistance during scheduled performances.

- MEMBER BENEFITS INCLUDE -
- An exclusive code for online offers
- "The Spotlighter" monthly E- Newsletter
- Privilege for theatre tickets
- Eligibility for special offers
- Discount on party costume hire
- Promotional events
- Social events
- Some indemnity when working in or on a Production
- Renew online (from 2014)

Follow us on Facebook and Twitter.

www.spotlighttheatre.com.au

Location! Location! Location!



Spotlight Theatre Complex comprises of two highly equipped theatres, Green room, a costume-hire & retail outlet, 'Youth Theatre' facilities, bookings centre, store-rooms and workshop facility. On-premises limited parking.

All activities situated conveniently in the heart of the Gold Coast.

Mail to Spotlight MEMBERSHIP, PO Box 8074 GCMC Q. 9726 or visit

The Spotlight Theatrical Company, 185-187 Ashmore Road, Benowa, Qld. 4217

Ph. Shop 07 5539 4700

Ph. Theatre/Bookings 07 5539 4255

Copy of Constitution and other rules and conditions available on request.

Public Liability Insurance held.

HELP YOUR THEATRE BY SUPPORTING OUR LOCAL SPONSORS

THANK YOU MEMBERS, VOLUNTEERS AND SUPPORTERS IN OUR FUNDRAISING VENTURE WITH BENOWA GARDEN S GRILL'D LOCAL MATTERS. WE CAME IN SECOND SECURING \$100 AND THANK YOU TO GRILL'D FOR GIVING US THE CHANCE TO PARTICIPATE IN THEIR LOCAL MATTERS PROMOTION.



PARKING AT BENOWA GARDENS
FOR SPOTLIGHT MEMBERS, VOLUNTEERS, & PATRONS
IS STRICTLY 3 HRS DAILY.
PLEASE PARK IN THE UNDERGROUND CARPARK.
(NOT IN THE TOP CARPARK NEAR THE THEATRE)
PLEASE NOTE: THE 9PM CLOSING TIME IS WAIVED AND IS 11PM
WHEN THERE ARE NIGHT TIME PERFORMANCES AT SPOTLIGHT.



**GOLD COAST
THEATRE ALLIANCE**

For an update on all current and scheduled plays and shows by Gold Coast and Tweed Shire member groups visit the website:
<http://www.goldcoasttheatre.com.au>



**SPOTLIGHT
COSTUME HIRE**

We have thousands of costumes!

OPENING HOURS
Mon, Tues, Wed, Fri
9am - 5.30pm
Thurs - 9am - 7pm
Sat - 9am - 4pm
185-187 Ashmore Rd Benowa
(Next to the Benowa Gardens Shopping Centre)

a huge range of
unique & unusual accessories to buy or hire!
Hats, masks, jewellery, wigs, stockings, head pieces & much more
Mehron Theatrical & Special Effects makeup

5539 4700
e: costume-hire@spotlighttheatre.com.au
www.spotlight-costume-hire.com

Don Kibble (Gold Coast)
Drawing Office Supplies Pty Ltd
18 George Street, Southport 4215 Ph: 0755 320 499
Email: plans@kibbles.com.au Web: www.kibbles.com.au Est.1977
Plan Printing, Photocopying & Binding, Colour Copying, Colour and Black & White Scanning
Plan Reductions & Enlargements, Laminating,
Plan Filing Systems, Drafting Supplies and Plotting Media

*Thank you for your Response to our
Sponsor a Chair Request
Donations received up to 14/12/2016*

YOU CAN ALSO SPONSOR A CHAIR ON-LINE.
www.spotlighttheatre.com.au and click on SPONSOR A CHAIR.



**SPOTLIGHT
THEATRICAL COMPANY**



SPONSOR A CHAIR

**Please contact SPOTLIGHT THEATRE on 07 5539 4255
and they will assist you!**

The Spotlight Theatrical Company wishes to acknowledge and thank you for your donation to sponsor a chair/s. This sponsorship is urgently needed to replace 240 chairs with new, quality, stackable chairs to fill both our main stage theatre and basement theatre. The cost of a chair is \$90.00 and Spotlight will have a plaque created and attached to back of every chair purchased by a sponsor.

As this is considered a donation, it would be tax deductible and a tax receipt will be forwarded to person/business donating.

Should you wish to become part of this sponsorship please complete the following and forward to:

Spotlight Theatrical Company, PO Box 8074, Gold Coast Mail Centre, Qld 9726

Or, personally deliver to:

Costume Hire, Spotlight Theatre, 185-187 Benowa Road, Benowa.

Details to appear on plaque: PLEASE PRINT CLEARLY BELOW IN THIS TINTED AREA:

Send tax receipt to:

Name: _____

Address: _____

Phone No: _____ Email: _____

Payment Type: Cash Cheque Amex Visa Master Card

Card No.	Expiry Date	CCV No.

- SPONSOR -
Spotlight Theatre acknowledges and thanks

for their substantial Rate donation.

NAME	Chair/s
Spotlight Golden Girls	1
Marilyn Culell	2
Harry and Val Leftwich	2
Judith A Dautel	1
Chris and John Dickinson	1
Deborah Beskin	2
Joseph and Wendy Hawryluk	1
Drew Anthony	1
Quota International Of Gold Coast	4
Tanele Storm Graham	1
Brian Graham	1
Erica Graham	1
Terry Kalaf	1
Pauline Davies	1
Marjorie Adams	1
William Collins	1
Robyn Collins	1
Mrs B. Elliott	1
Shirley King	2
Deborah Bolt	1
Doreen Hinton	1
Malcolm Davidson	1
Patricia Drew	2
Robert Deatherage	1
Trish Pederson	11
Sewroo Products	1
Karyn Lively	1
Russell & Elizabeth White	1
Katherine Ogge	1
Julz Smith	1
Judith A Dautel	1
L Kealton	1
Mrs A Watt	1
Mrs Shirlie Foxover	2
Mrs P Reik	1
Lynn Benson	1
Maureen Stevenson	4
Jill Downie	1
John Everingham	1
Evo 1 Pty Ltd	1
Gerald Moses	1
Heydon Harvey	2
Sue Davies	1
Brooke Daley	2
Janette & Michael Webb	2
Stella Simpson	1
Adrian Hoffman	2
Audrey Goetz	1
Sandy Ackerman	1
Surfers Paradise Chiropractic Health & Welfare Centre	2
Lisa Story	2
Drew Anthony	1

CONTACT INFORMATION – SPOTLIGHT COUNCILLORS 2016-2017

President: Duncan Sims e: dunlo@ozemail.com.au
Secretary: Shirley King e: shirley@spotlighttheatre.com.au
Treasurer: Michelle Edwards e: michelle@spotlighttheatre.com.au
Vice President: Patsy Drew e: patsydrew@bigpond.com

Councillors

Tony Alcock e: mailbox@spotlighttheatre.com.au
Erica Graham e: admin@aquashop.com.au
Val Leftwich e: val@leftwich.com.au
Di Morgan e: didimorgan13@gmail.com
Matt Pearson e: mattp190391@gmail.com
Nathan Skaines e: isaidpetisaidlove@gmail.com
Katie Steuart-Robins e: kgrace091@gmail.com
Jamie Watt e: j_j_watt@hotmail.com

Production Committee

Chair Person: Tony Alcock e: mailbox@spotlighttheatre.com.au
Committee: John Davidson, Aiden Ossovani, Matt Pearson, Jackie Pointing and Jamie Watt

Theatre Technical Consultant

Michael Sutton

Lighting Co-ordinator

Shaun Wilson

Library Matt Pearson e: mattp190391@gmail.com

Small Props Terri Woodfine Katie Steuart-Robins

Insurance Glenda Kusters Insurance matters e: glenda@leaib.com.au

Fire & Security Contacts Tony Alcock Jamie Watt

Administration Liaison/Group Bookings/Membership Coordinator/ Royalties/Theatre Hire & Usage/Key Dist. & Registration/Gift Coordinator/Volunteer FoH Roster Coordinator/Liaison

Administration W 07 5539 4255

Publicity e: publicity@spotlighttheatre.com.au Tony Alcock

Social Media Jamie Watt e: j_j_watt@hotmail.com

Costume Hire Michelle May W 5539 4700 Tony Alcock – **Costume Coordinator** – W 5539 4255

Youth Theatre Teachers e: youth@spotlighttheatre.com.au

Andrew Cockroft-Penman (Head Teacher), Jonathan Whitlow (Musical Theatre Teacher)
Hannah Crowther (Intermediate Drama Teacher), Terri Woodfine (Junior Drama Teacher),
Jacy Moore (Film & TV Teacher), Martina French (Vocal Coach)

Youth Theatre Administrator Val Leftwich e: val@leftwich.com.au

Youth Theatre Liaison Officer Martina French & Val Leftwich

Golden Girls Liaison Noni Buckland e: noni.buckland@bigpond.com

Sponsorships Erica Graham e: erica@spotlighttheatre.com.au

Bar Manager - RMLV Fred Newth

Charity Night Co-ordinator Helen Maden e: hpmaden2@gmail.com

G.C. Theatre Alliance Representative Joel Beskin / Erica Graham

Webmaster Michael Thomas e: stc_webmaster@showbizaustralia.com

Programmes Chris Dickinson e: chris@spotlighttheatre.com.au

Spotlighter Editor Shirley King e: shirley@spotlighttheatre.com.au

185-187 Ashmore Road Benowa PO Box 8074 GC Mail Centre Q 9726 P: 07 5539 4700

e: mailbox@spotlighttheatre.com.au youth@spotlighttheatre.com.au

Online Booking: www.spotlighttheatre.com.au or Phone 5539 4255

www.spotlight-costume-hire.com