

Official Newsletter
of

THE SPOTLIGHT THEATRICAL COMPANY

Fostering an outlet for creative youth and community, while seeking to produce vibrant, quality entertainment that enriches, engages and educates.




SPOTLIGHTER

October 2017

THE SPOTLIGHT THEATRICAL COMPANY
PROUDLY PRESENTS

A new production of
BOUBLIL and SCHÖNBERG'S



Les Misérables

BOOK AND PAY TODAY
PHONE: 07 5539 4255
WWW.SPOTLIGHTTHEATRE.COM.AU
20 OCTOBER - 11 NOVEMBER 2017

Les Misérables is licensed by Hal Leonard Australia Pty Ltd
by arrangement with Music Theatre International and CAMERON MACKINTOSH LTD

INSIDE:

Take a Chance on Me - Reviews

President's Report

Youth Theatre Information

Oliver! Audition Notice

Spotlight Golden Girls

... and more

SPOTLIGHT YOUTH THEATRE
JUNIOR DRAMA CLASSES
PRESENT

THE
**PIED
PIPER
OF HAMELIN**

WRITTEN & DIRECTED BY
TERRI WOODFINE

BASEMENT THEATRE

FRIDAY 13 OCTOBER 7 pm
SATURDAY 14 OCTOBER 11am & 7 pm
SUNDAY 15 OCTOBER 11 am

BOOKINGS 55394255
www.spotlighttheatre.com.au



Take a Chance on Me enjoyed a fabulous opening weekend, getting great reviews and offering people a fantastic night out. You don't have to pay the big bucks at QPAC to find a show with plenty of punch, professionalism and 100% enjoyment.

"Just had to say THANK YOU for a really entertaining evening on Opening night. Congratulations to director, cast and crew on a wonderful production, you are to be commended, it was so good." – Coral Kelly

"What a play and what a production. Congrats to Helen and her amazing cast. We thoroughly enjoyed every moment of this very entertaining play. Congratulations!" – Brenda Warren

"**Take a Chance on Me** is fast-paced and funny. The dialogue is delicious as are the characters. Treat yourself to a fun time out of dating (from a safe distance) and the anguish that goes with it. Don't be deceived by the small, plain stage. Once the curtain opens, magic happens thanks to the brilliant teamwork of director, Helen Maden and stage manager, Del Halpin. Helen has done a brilliant job in bringing this play to life. It's truly amazing how she's been able to create so many different settings and scenarios with such a small budget. Helen, cast and crew obviously worked equally hard to make sure the audience's experience was a fabulous one. Roger Hall's diversity of characters is what makes this play so endearing. He is to be commended on a fine piece of work made all the more enjoyable because of its honesty". – Jacquelin Melilli – Weekend Notes.

Don't miss this highly entertaining Play. Intimate theatre at it's best.

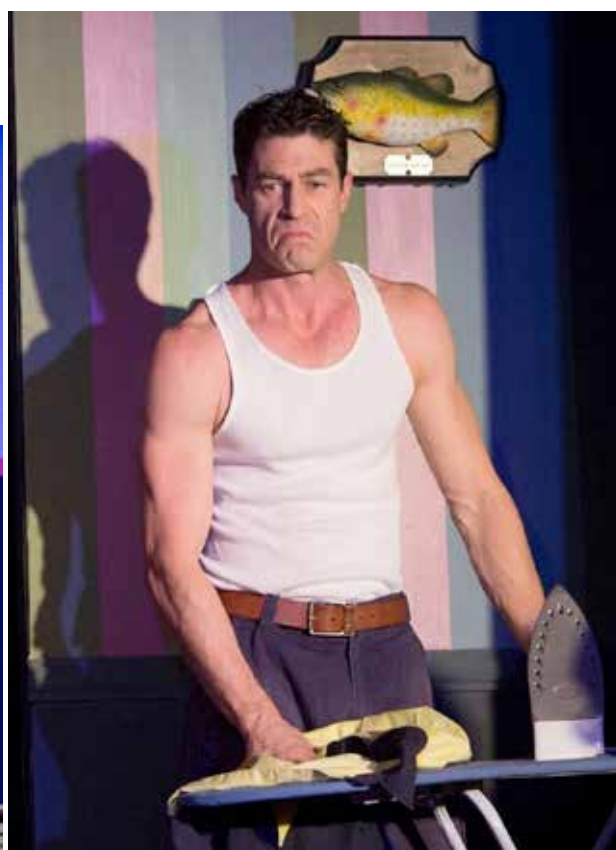
Tickets are selling fast.

BOOKINGS : Phone 07 5539 4255 Online: www.spotlighttheatre.com.au



**TAKE A
CHANCE
ON ME**

**By ROGER HALL
Directed by
HELEN MADEN**



TAKE A
CHANCE
ON ME

By **ROGER HALL**

Directed by
HELEN MADEN



SPOTLIGHT YOUTH THEATRE
intermediate drama classes

present

Snow White

WRITTEN BY - MICHELE L. VACCA
DIRECTED BY - HANNAH CROWTHER

Basement Theatre

FRIDAY 24 NOVEMBER 7 PM
SATURDAY 25 NOVEMBER 7 PM
SUNDAY 26 NOVEMBER 2 PM

BOOKINGS
55394255

Produced by Special Arrangement with
CLASSICS ON STAGE! of Chicago



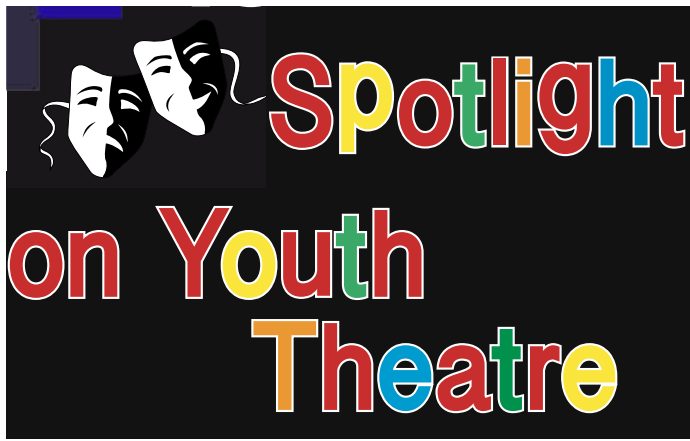
Joel Beskin's 'Theatre Roundup'

is now on Air every week on Tuesdays.

Tune in to 4CRB 89.3FM between 2.35pm and 3pm
for Community Theatre News and

Kate Peters' 'Showbiz Buzz'

will air on the same station at 2.15pm Friday afternoons.



Spotlight on Youth Theatre

SPOTLIGHT TEACHING FRATERNITY & ADMINISTRATORS:

ANDREW COCKROFT-PENMAN (Senior Drama Teacher)
JESS PAPST (Senior Music Theatre Teacher)
HANNAH CROWTHER (Intermediate Teacher)
TERRI WOODFINE (Primary Teacher)
JACY MOORE (Film & TV Teacher)
VAL LEFTWICH (YT Administrator)
VAL LEFTWICH / KAY HAWKER (YT Liaisons)

Spotlight Youth are now working hard on their various productions and showing much enthusiasm. Terri, Hannah and assistants are well underway with Terri's Juniors performing on the 13th, 14th and 15th October which is really close now.

Hannah has a little longer with the Intermediate Drama taking place on the 24th, 25th and 26th November. **Snow White** is their performance and this did cause a little confusion with the Spotlight's pantomime **Snow White** but all is well now.

The Senior Drama production of **Peter Pan** was on the 9th September. It was a great performance by the students whose improvisation and speech projection was second to none. I really enjoyed it as did a full house of parents and friends. It was such a professional performance from the students and we were all very proud of them. Both Andrew and Terri have certainly worked hard with them and it showed.

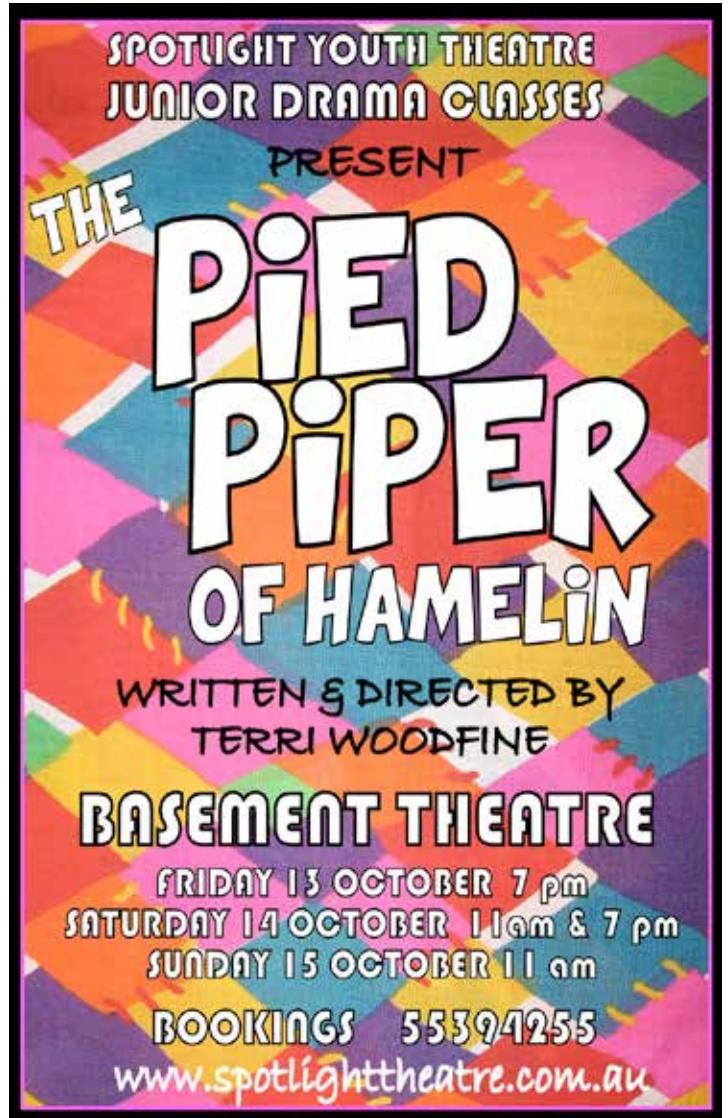
Jonathan left for London at the end of August, he will be greatly missed. However, the students were very excited when they learned that Jess Papst was coming back to take over from Jonathan until the end of Term 4. Jess is commuting from Melbourne every week and is a great asset to the students at the theatre who are now working towards their production in December.

Classes, with the exception of Senior Drama are closed until the end of the year. I am now taking enrolments for new students next year and anyone who would like a form please contact me and I will make sure you get the necessary paperwork. If you are already a student then there is no need to complete a new form I will be in touch with everyone during the month of November, regarding 2018.

Once again I have to acknowledge the hard work put in by Tony and Matt Pearson, who both work hard with the students.

It is getting to the point with our productions that you do need to let me know if a student cannot attend a lesson as it can make a big difference to the teacher who is planning the lesson.

Thanks to Kay Hawker for helping me with the payments and distribution of notices of which there are many before productions. If you have a query about Youth Theatre please do not email Shirley or Kay, I am the person you need to talk to. If you get a form from Kay that you would like clarification on then please call me, I will do my best to help.



Valerie Leftwich – Administrator Spotlight Youth Theatre

**YOUTH THEATRE STUDENTS ENJOYED
"DRESSING UP" ON THEIR FINAL
LESSON OF TERM**



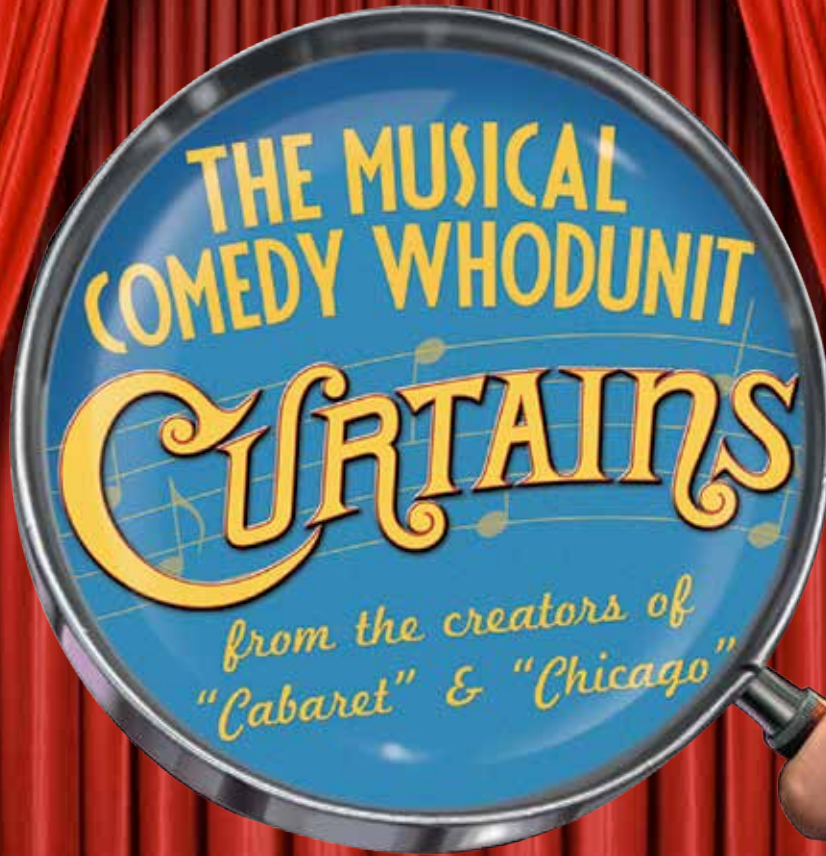
*Pics forwarded
by Primary Teacher,
Terri Woodfine.*





The Spotlight Theatrical Company
Music Theatre Classes

proudly present



young@part

Book & Additional Lyrics by *Rupert Holmes*

Music & Additional Lyrics by *John Kander*

Lyrics by *Fred Ebb*

Young@Part™ Edition adapted by Peter Stone

BY ARRANGEMENT WITH ORIGIN™ THEATRICAL ON BEHALF
OF THEATRICAL RIGHTS WORLDWIDE, NEW YORK
www.origintheatrical.com.au

2017

30 NOVEMBER, 1, 2, 3, DECEMBER

MAIN THEATRE

BOOK & PAY

5539 4255

Online: www.spotlighttheatre.com.au

A new production of
BOUBLIL and SCHÖNBERG'S

Mr. Les Misérables

Les Misérables is licensed by Hal Leonard Australia Pty Ltd
by arrangement with Music Theatre International and CAMERON MACKINTOSH LTD

OCT 20 - NOV 11

BOOKINGS : 075539 4255
www.spotlighttheatre.com.au



Don Kibble (Gold Coast)

Drawing Office Supplies Pty Ltd

18 George Street, Southport 4215 Ph: 0755 320 499

Email: plans@kibbles.com.au Web: www.kibbles.com.au Est. 1977

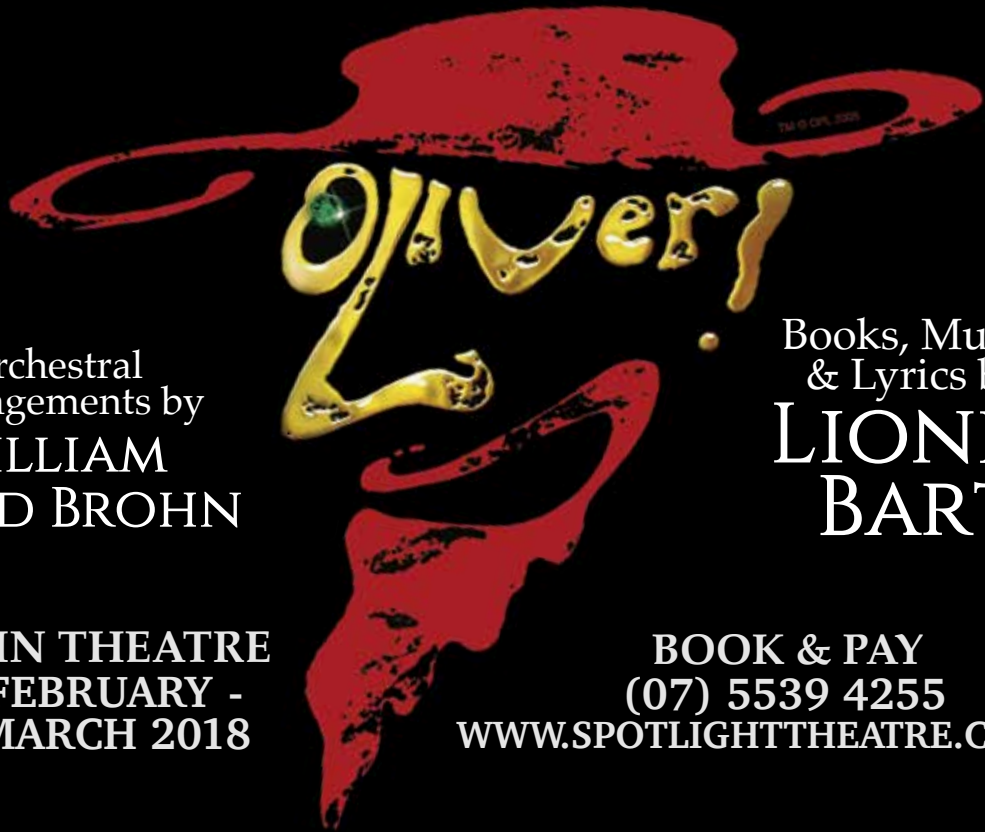
Plan Printing, Photocopying & Binding, Colour Copying, Colour and Black & White Scanning

Plan Reductions & Enlargements, Laminating,

Plan Filing Systems, Drafting Supplies and Plotting Media



The Spotlight Theatrical Company Proudly Presents



Orchestral
Arrangements by
**WILLIAM
DAVID BROHN**

Books, Music,
& Lyrics by
**LIONEL
BART**

**MAIN THEATRE
9 FEBRUARY -
3 MARCH 2018**

**BOOK & PAY
(07) 5539 4255
WWW.SPOTLIGHTTHEATRE.COM.AU**

Choreographed by
**JAMIE
WATT**

Directed by
**ANDREW
COCKROFT-PENMAN**

Vocal Direction by
**CAROLINE
TAYLOR**

By arrangement with Hal Leonard Australia Pty. Ltd,
exclusive representative of Cameron Mackintosh and the Southbrook Group.



'OLIVER!'

MUSIC, LYRICS AND BOOK BY LIONEL BART

Youth Auditions (Youth Roles + Ensemble)

22 & 23 OCTOBER, 2017

Adult Auditions (Adult Roles + Ensemble)

22 OCTOBER, 2017

Rehearsal Period

Commencing Late October, 2017

Show Dates

9TH of February – 3RD of March, 2018

NOTE: There is a **TWO WEEK BREAK** in the rehearsal schedule over **Christmas and New Year.**
A detailed rehearsal schedule will be made available to you prior to the commencement of rehearsals.

For an Audition Pack – please email spotlightonoliver@gmail.com

Consider Yourself One of Us!

Consider yourself at home with Lionel Bart's classic musical based on Charles Dickens' novel, Oliver Twist. The Tony and Olivier Award-winning show is one of the few musicals to win an Academy Award for Best Picture and is widely hailed as a true theatrical masterpiece by actors and audience members alike.

The streets of Victorian England come to life as Oliver, a malnourished orphan in a workhouse, becomes the neglected apprentice of an undertaker. Oliver escapes to London and finds acceptance amongst a group of petty thieves and pickpockets led by the elderly Fagin. When Oliver is captured for a theft that he did not commit, the benevolent victim, Mr. Brownlow takes him in. Fearing the safety of his hideout, Fagin employs the sinister Bill Sikes and the sympathetic Nancy to kidnap him back, threatening Oliver's chances of discovering the true love of a family.

WHO WILL I BE WORKING WITH?



**DIRECTOR // ANDREW
COCKROFT-PENMAN**

(Mystery of Edwin Drood, Joseph ATATD)



**MUSICAL DIRECTOR //
CAROLINE TAYLOR**

(Higher and Higher, Joseph ATATD)



**CHOREOGRAPHER //
JAMIE WATT**

(Higher and Higher, 9 to 5)

ASSISTANT DIRECTOR

Sophie Kleinschmidt

DANCE CAPTAIN

Applications Open

STAGE MANAGER

Diana Morgan

HAIR DESIGN

Ann-Britt Riget

MAKE UP DESIGN

Lee Patterson

**CHILDREN'S
CASTING LIAISON**

Kim Reynolds

COSTUME DESIGN

Dawn Warrington

LIGHTING DESIGN

Koreena Nesbitt

SOUND DESIGN

Nick Willner

REHEARSAL PIANIST

Mary Walters

SET CONSTRUCTION

Butch Bernet

CONFIRMED STAGE CREW (Applications still open)

Tex Houston, William Pulley, Briana Mirabile and Jon Allwood

CONFIRMED TECHNICAL CREW (Applications still open)

Rodrigo Medina Noël, Nick Munday and Shonny Pai

THE ENTIRE PRODUCTION TEAM OF 'OLIVER' UNDERSTAND THAT AUDITIONS CAN BE A NERVE WRACKING PROCESS! WE HAVE DESIGNED THE PROCESS TO BE AS FUN AND INVITING AS POSSIBLE, WITH AN AIM TO SEE YOU SUCCEED. WE UNDERSTAND THAT YOU WILL DO YOUR BEST WORK WHEN YOU ARE RELAXED AND AT EASE SO PLEASE DO THROW AWAY YOUR INHIBITIONS AND BE READY TO JOIN IN THE GAME!

PLEASE DON'T HESITATE TO CONTACT US WITH ANY QUERIES VIA spotlightonoliver@gmail.com

NOTE: ROLES MARKED WITH ** WILL BE AUDITIONED AT THE YOUTH AUDITIONS

**** OLIVER TWIST (This role will be double cast)**

SONG: WHERE IS LOVE?

Male Principal Role. The protagonist of the story, he is an innocent, malnourished, lonely orphan boy born in the Workhouse. His longing to find a place where he belongs makes him vulnerable but he is still tough and feisty. British (not cockney) accent. Some minor dancing. Age to look 8 – 13. Unbroken voice.

MR BUMBLE

SONG: BOY FOR SALE

Male Supporting Role. The self- righteous, self- appointed beadle, Mr. Bumble oversees the operations of the workhouse where Oliver lives as a child. He preaches Christian morality, but behaves without compassion towards the paupers in his care. Strong character role, bordering on melodrama. Age to look 45 – 65

WIDOW CORNEY

SONG: I SHALL SCREAM

Female Supporting Role. The domineering workhouse mistress. Widow Corney is an “old maid”, who has been left on the shelf. In Act Two she succeeds in trapping Bumble in marriage and hounds him to no end. Like Bumble, she borders on melodrama. Cockney accent required. Age to look 45 – 55

MR SOWERBERRY

SONG: THAT’S YOUR FUNERAL

Male Supporting Role. The undertaker. Sinister, an uneasy presence who takes delight in death. A very dark sense of humour. Age to look 40 – 60

MRS SOWERBERRY

SONG: THAT’S YOUR FUNERAL

Female Supporting Role. Assists her husband in the undertaking business. A perfect match to her husband. Age to look 40 – 60

CHARLOETTE SOWERBERRY

SONG: ADULT ENSEMBLE AUDITION SONG

(Note: this role is not a soloist but the actor will also partake in the ensemble)

Female Supporting Role. The rude but also flirtatious daughter of the Sowerberrys. Age to look 16 – 19

NOAH CLAYPOLE

SONG: ADULT ENSEMBLE AUDITION SONG

(Note: this role is not a soloist but the actor will also partake in the ensemble)

Male Supporting Role. A nasty piece of work who is Mr Sowerberry’s apprentice. Enjoys a flirty relationship with Charlotte and Oliver is the first example of someone beneath him in the hierarchy. Age to look 16 – 20

**** JACK DAWKINS (ARTFUL DODGER)**

SONG: CONSIDER YOURSELF

Male Principal Role. Very energetic, highly personable, intelligent and savvy beyond his years, Fagin’s right hand “man”. Preferably with excellent song and dance skills. Must have a dynamic stage presence. Cockney accent required. Age to look 13 – 16

FAGIN

SONG: Reviewing the Situation

Male Principal Role. A conniving, career criminal whose charm hides a cold heart. He takes in homeless boys and teaches them to pick pockets for him. Perhaps could be described as an old thespian, a man of many dimensions, a leader, a vagrant, a father, a teacher, a lost soul & an eccentric. Significant character acting and singing. Age to look 35 – 50

NANCY

SONG: AS LONG AS HE NEEDS ME REPRISE

Female Principal Role. A cockney girl with a warm heart, Nancy is an abused career thief, prostitute and former child pickpocket. A sensitive side and noble and likeable but hardened and streetwise beyond her years. She lives with and loves Bill Sykes, pretty, intelligent, longs for a better life. She takes a liking to Oliver and treats him like her own child, but is eventually murdered for the steps she takes on his behalf. Strong singer (belter), actor, some dancing. Cockney accent required. Age to look 21 – 35

BET

SONG: IT’S A FINE LIFE

Female Supporting Role. Nancy’s loyal friend who is one of Fagin’s former pickpockets. Cockney accent required. Age to look 15 – 20

MR BROWNLOW

SONG: NON SINGING ROLE

Male Supporting Role. Oliver’s kind long lost grandfather, a man of wealth and breeding. British (not cockney) accent. Age to look 50 – 75

BILL SYKES

SONG: MY NAME

Male Principle Role. A villain and Nancy’s brutal boyfriend and eventual murderer. Sometimes with bursts of aggression, other times chillingly subdued, he will always command a room. Age to look 30 – 45

Ensemble Roles: MRS BEDWIN (Where is Love), DR GRIMWIG (Adult Ensemble Song), OLD SALLY (Adult Ensemble Song)

ADULT ENSEMBLE

SONG: CONSIDER YOURSELF

Workhouse Governors, workers in the workhouse, thieves, London merchants, street vendors, bar keepers, policemen etc. Cockney and traditional British accents required. Opportunity for featured dancers. Some movement required for all ensemble. Included in this are the featured soloists: The Rose Seller, Strawberry Seller, Milk Maid and Knife Grinder.

**** YOUTH ENSEMBLE (These roles will be double cast)**

SONG: WHERE IS LOVE OR CONSIDER YOURSELF

We are looking for boys and girls who are bright and personable. All individuals cast will be children in the Workhouse and/or part of Fagin’s Gang and/or Citizens in the streets of London. Preferably no taller than 155cm with excellent singing skills and some dance experienced preferred. Aged 9-15

Email spotlightonoliver@gmail.com for a full audition pack and to book an audition slot

PRESIDENT'S REPORT

I hope you managed to get to see our wonderful play ***Take a Chance on Me*** directed by the extremely talented Helen Maden. The superb experienced cast performed excellently to very appreciative audiences and the Basement Theatre was rocking with laughter. Helen's eye for detail as always is on display. Congratulations to Helen and her cast and crew for creating such an enjoyable show.

Well Done to all.

Rehearsals are well underway now for ***Les Misérables*** which opens on October 20 th in the Main Theatre. This will be a show not to miss so secure your seat now. Tickets sales have been strong so why not go online now

www.spotlighttheatre.com.au

and make sure you secure your seats.

The Youth Theatre students will be showcasing their talents and skills over the next couple of months so come along and see the stars of the future.

Costume Hire is gearing up for Halloween so please support your shop for all your party needs.

As usual both theatres are always busy at this time of the year so thank you to all of you who give so freely of your time to make sure that Spotlight can function. It is very much appreciated.

Look after yourself and each other and remember a smile is infectious so spread one now.

Best Regards

Duncan Sims

President



**GOLD COAST
THEATRE ALLIANCE**

For an update on all current and scheduled plays and shows by Gold Coast and Tweed Shire member groups visit the website:
<http://www.goldcoasttheatre.com.au>

**BRONZE
CORPORATE
SPONSOR**



LEA

Securing Peace Of Mind

Insurance Brokers
For all your insurance requirements contact Glenda on (07) 5538 8988

Spotlight Theatre is a foundation member of the Gold Coast Theatre Alliance.





The Spotlight Theatrical Company

proudly presents

Snow White



*Great Family entertainment
for the school holidays!*

Written & Directed by
TERRI WOODFINE

Choreographer
SOPHIE KLEINSCHMIDT

BOOK AND PAY
(07) 5539 4255

www.spotlighttheatre.com.au

BASEMENT THEATRE
3 – 13 JANUARY 2018
Two shows daily
10:30am & 2:00pm



GOLDEN GIRLS NEWS

We are now well into our second season for the year.

We have completed shows at the following venues:-

Melody Park, Gilston
Bupa, Merrimac
St Andrews, Tallebudgera
Sandbrook, Burleigh
Waters
The Terraces, Varsity
Lakes.

We have twenty one shows left to perform in our second season, which will take us through to the end of the year.

We are also busy rehearsing our Christmas numbers for our November and December shows.

I have included two photos, one of our group with Marilyn, Sam, Kerry, myself and Trish in back row and Marilyn, Phyllis, Hazel and Eula in the front row. The second photo is of our *Lambeth Walk* number with Trish, Kerry, Sam, Marilyn and myself from left to right.

If you can sing and or dance and would like to be part of our group and can spare the time and energy, then please contact Kerry on 0490 157 512 for details. If you are not a singer or dancer but would love to be part of our group, we also need a person to help with sound, setting up and costumes.

Now back to the boards.

Noni Buckland

Golden Girls Liaison





The Spotlight Theatrical Company

*"Fostering an outlet for
creative youth and community, while seeking to
produce vibrant, quality entertainment
that enriches, engages and educates."*

2018 PLAYBILL

Snow White	Basement	3 - 13 Jan
Oliver!	Main	9 Feb - 3 Mar
Baskerville – A Sherlock Holmes Mystery	Basement	27 Apr - 13 May
Heathers – The Musical	Main	25 May - 16 June
Music Theatre Showcase	Main	28, 29, 30 June
Jack and the Beanstalk	Basement	4 - 14 July
Strictly Ballroom The Musical	Main	27 Jul - 18 Aug
Senior Drama	Main	7, 8 Sept
The Marvelous Wonderettes	Basement	21 Sep - 7 Oct
Junior Drama	Basement	19, 20, 21 Oct
We Will Rock You	Main	26 Oct - 17 Nov
Intermediate Drama	Basement	30 Nov, 1, 2, Dec
Music Theatre	Main	6, 7, 8, 9 Dec
Spotlight On Christmas	Main	14, 15 Dec



TICKET PRICING & BOOKINGS:
www.spotlighttheatre.com.au p. (07) 5539 4255
185-187 Ashmore Rd, Benowa Qld
facebook.com/SpotlightTheatricalCompany

Spotlight Theatre is a Foundation Member of the Gold Coast Theatre Alliance



*The Spotlight Theatrical Company
is a Participant in the 2017
Gold Coast Area Theatre Awards.*



CONTACT INFORMATION – SPOTLIGHT COUNCILLORS 2016-2017

President: Duncan Sims e: dunlo@ozemail.com.au
Secretary: Shirley King e: shirley@spotlighttheatre.com.au
Treasurer: Michelle Edwards e: michelle@spotlighttheatre.com.au
Vice President: Patsy Drew e: patsydrew@bigpond.com

Councillors

Tony Alcock e: mailbox@spotlighttheatre.com.au
Nathan Skaines e: isaidpetisaidlove@gmail.com
Katie Steuart-Robins e: kgrace091@gmail.com
Jamie Watt e: j_j_watt@hotmail.com

Production Committee

Chair Person: Tony Alcock e: mailbox@spotlighttheatre.com.au
Committee: Aiden Ossovani, Matt Pearson, Jackie Pointing, Jamie Watt, Shari Ward and Diana Morgan

Theatre Technical Consultant

Michael Sutton

Lighting Co-ordinator

Shaun Wilson

Library Matt Pearson e: mattp190391@gmail.com

Small Props Terri Woodfine

Insurance Glenda Kusters Insurance matters e: glenda@leaib.com.au

Fire & Security Contacts Tony Alcock Jamie Watt

Administration Liaison/Group Bookings/Membership Coordinator/ Royalties/Theatre Hire & Usage/Key Dist. & Registration/Gift Coordinator/Volunteer FoH Roster Coordinator/Liaison

Administration W 07 5539 4255

Publicity e: publicity@spotlighttheatre.com.au Tony Alcock

Social Media Jamie Watt e: j_j_watt@hotmail.com

Costume Hire Michelle May W 5539 4700 Tony Alcock – **Costume Coordinator** – W 5539 4255

Youth Theatre Teachers e: youth@spotlighttheatre.com.au

Andrew Cockroft-Penman (Senior Drama Teacher), Jessica Papst (Music Theatre Teacher)

Hannah Crowther (Intermediate Drama Teacher), Terri Woodfine (Junior Drama Teacher),

Jacy Moore (Film & TV Teacher), Martina French (Vocal Coach)

Youth Theatre Administrator Val Leftwich e: valleftwich41@gmail.com

Assistant to Youth Theatre Administrator Kay Hawker

Golden Girls Liaison Noni Buckland e: noni.buckland@bigpond.com

Sponsorships Erica Graham e: admin@aquashop.com.au

Bar Manager - Duncan Sims e: dunlo@ozemail.com.au

Charity Night Co-ordinator Helen Maden e: hpmaden2@gmail.com

G.C. Theatre Alliance Representative Joel Beskin / Erica Graham

Webmaster Michael Thomas e: stc_webmaster@showbizaustralia.com

Programmes Chris Dickinson e: chris@spotlighttheatre.com.au

Spotlighter Editor Shirley King e: shirley@spotlighttheatre.com.au

185-187 Ashmore Road Benowa PO Box 8074 GC Mail Centre Q 9726 P: 07 5539 4700

e: mailbox@spotlighttheatre.com.au youth@spotlighttheatre.com.au

Online Booking: www.spotlighttheatre.com.au or Phone 5539 4255

www.spotlight-costume-hire.com